



GOMMAIRE

organic living



OUTDOOR 2024







## INTRO

GOMMAIRE - Organic Living is a Belgian brand that brings you a vast collection of interior and exterior furniture, as well as a wide array of decorative items.

From authentic and teak wood tables and chairs to first-rate upholstered sofas, lounge sets, matching accessories and more: our brand has all the right ingredients to make a house into a home. Our timeless, organic and unique pieces will provide you with a lifetime of enjoyment in a highly qualitative and exclusive setting.

Almost everything in our collections has been conceived and created by our own designers, including CEO Laurent De Greef. The innovative, nature-inspired designs by their hand and the traditional techniques that are used to make them come to life, merge into the masterful result that is GOMMAIRE.

Browse through this catalogue, be visually indulged and discover our brand for yourself.





## OUR STORY

GOMMAIRE - Organic Living started off with the dream of seeing a Belgian line of furniture come to life. In January 2015, every effort was made to see it come true. Today our brand has surpassed even our wildest dreams: from a small Belgian furniture brand with big aspirations to an established player in the international interior and exterior market. And we are working hard to continue growing, so our furniture can be enjoyed across the globe.

With our furniture and decoration design, we aim to tell a story. A story in which timeless, unique and qualitative enjoyment is the common thread. In which nature plays its role as protagonist with fervour, as it is preserved in the shapes and materials of our designs. And in which the individual pieces of furniture, like separate story lines, come together to form a strong, organic overall concept.

The tellers of that story are the people who have shaped GOMMAIRE and continue to do so to this day. From management to employees to everyone who markets the brand and its products: we are passionate about our trade, committed to continuously improve and willing to go the extra mile for our customers.

GOMMAIRE is more than furniture. It is an experience. It is a beautiful contrast between creative innovation and traditional craftsmanship. It is enjoying life in a sustainable, timeless and exclusive atmosphere.



## OUR PEOPLE

Our home based Belgian team is reinforced by skilled artisans who expertly and passionately bring our designs to life, using the local traditions and natural resources of India, Indonesia, Morocco and Portugal. It is their masterful craftsmanship that inserts artisanal charm and authenticity into our collections.

GOMMAIRE runs on drive, professionalism and most of all teamwork. It is the minds of our inhouse designers that conceive innovative organic creations. It is the hands of our experienced craftsmen that capture the essence of nature's beauty in these designs. And it is the passion of our entire team that convinces people all over the world to hear our story, to experience our pieces, to live our brand.





## THE GOMMAIRE OUTDOOR COLLECTION

Our outdoor collection consists largely of nature's finest resource: natural teak wood, which blends together beautifully with the intrinsically integrated rope, wicker, rattan and other materials that make up our stunning outdoor items.

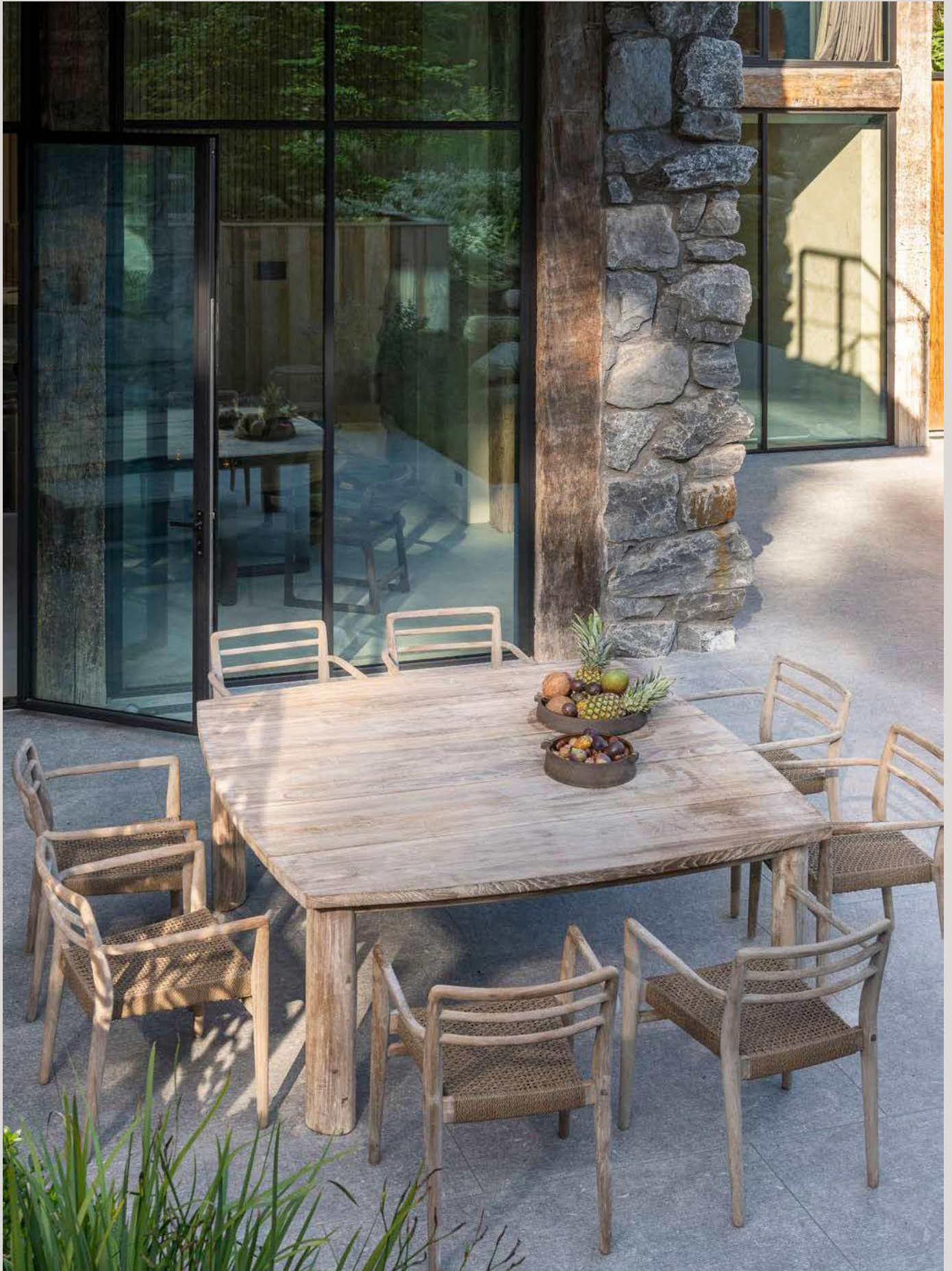
Our passion for seating comfort complements these materials: specially designed and handpicked fabrics manufactured within European borders add a high-quality finish to each upholstered design, as well as to our custom cushions. Professionally treated for outdoor usage, they will continue doing so for a long time. Discover the current fabric selection from page 168 onwards.

Telling tales of organic origin with their natural lines, shapes and textures, all exterior designs harmonise exceptionally well with the splendour of the outdoors. Natural imperfections in the materials are valued and many furniture pieces are left untreated, as we believe letting nature run its course only adds beauty and uniqueness to our designs.

Lounge sets will help you create a peaceful outdoor oasis. A wide range of teak wood tables and complementary chairs will help you put together the perfect setting for lovely lunches and late-night dinners. Bar tables, bar stools and matching accessories will fill up your terrace space with a summer-ready layout to watch the sunrises and sunsets in, with a morning coffee or an evening cocktail in your hand.

Experience our entire outdoor collection on the following pages. Be inspired by the carefully selected settings and discover more details about the outdoor designs in the technical specifications section, starting from page 174. Maintenance advice can be found from page 216 onwards.







## TABLE OF CONTENTS

Dining area	14
Lounge area	76
Accessories	144
Fabric selection	168
Technical specifications	174
Care & use	216
General terms & conditions of sale	234



THE ACTUAL COLOURS MAY VARY FROM IMAGES SHOWN,  
DIMENSIONS ARE INDICATIVE AND MAY DIFFER FROM REALITY.







## DINING AREA

A wide selection of chairs, benches and tables makes it easy to find the perfect seating arrangement for your outdoor dining area.

The beautiful blend of high-quality teak wood and rope, wicker and more, bring outdoor dining experiences to a new level. Expertly finished by means of careful handwork, all pieces exude craftsmanship. Moreover, they are all designed to complement each other, which means various combinations will have a desirable result.

In line with the GOMMAIRE philosophy, our wooden items are not treated, as we believe the natural material becomes more beautiful with usage and the passage of time. Discolouration and changes in patina caused by daylight, only add to their organic charm. However, to protect them and optimise their lifespan, we do have some maintenance products on offer. Advice on how to use them can be found from page 216 onwards.

May the following dinner settings fuel your inspiration and love for design. All technical specifications, fabric customisation options and maintenance advice can be found at the end of the catalogue.





THE ACTUAL COLOURS MAY VARY FROM IMAGES SHOWN,  
DIMENSIONS ARE INDICATIVE AND MAY DIFFER FROM REALITY.

Our outdoor tables and chairs are designed to reflect nature's splendour. The use of teak wood, renowned for its durability and added beauty after usage and time, forms the foundation of these exquisite pieces, providing a natural and warm ambiance to any outdoor setting.



LOW TABLE CARLO | P. 191 | EASY CHAIR CARLO | P. 178 | CUSHION SET EASY CHAIR CARLO | P. 178



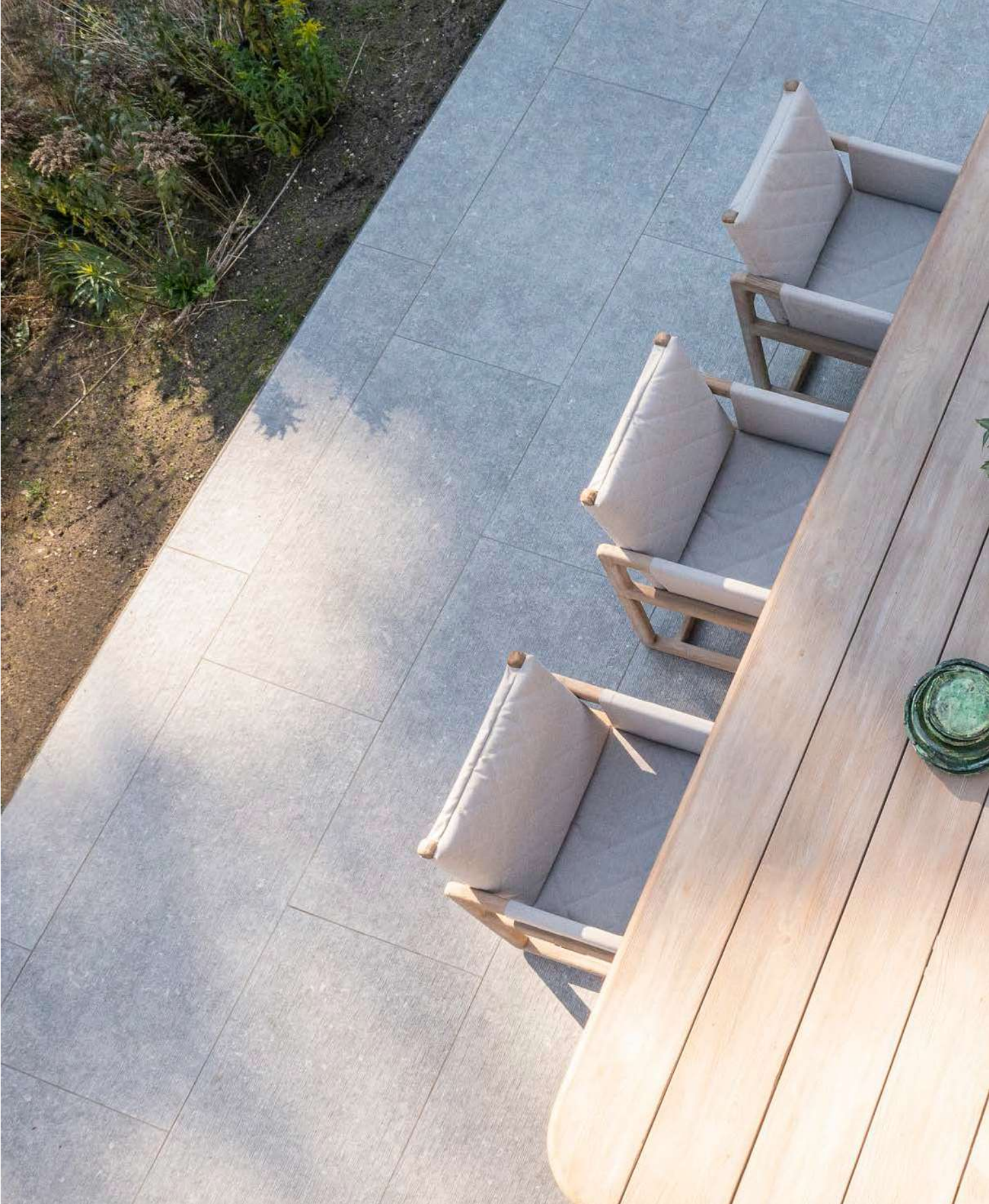




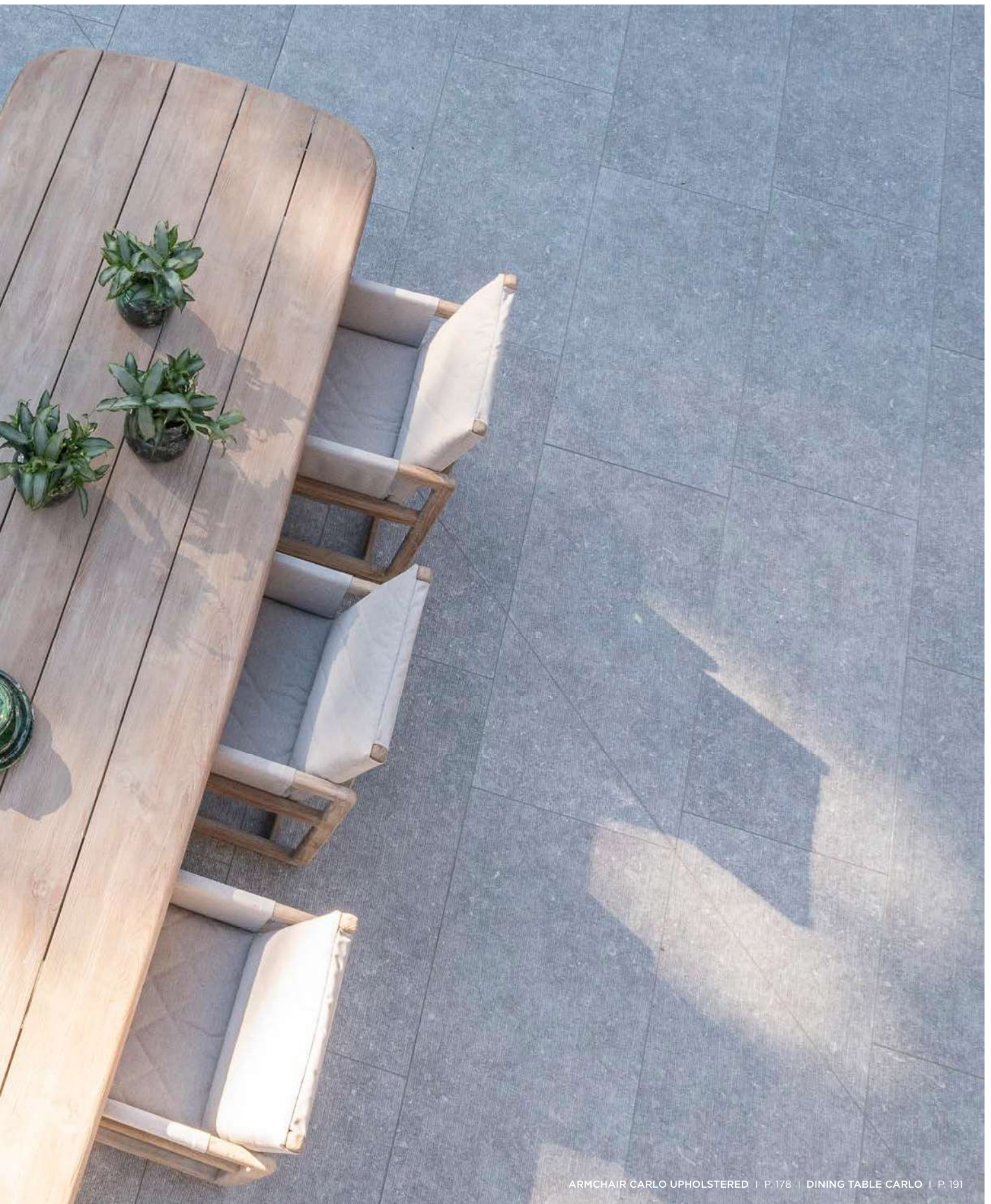












ARMCHAIR CARLO UPHOLSTERED | P. 178 | DINING TABLE CARLO | P. 191





DINING TABLE CARLO | P. 191 | ARMCHAIR JENNA | P. 179 | CUSHION ARMSCHAIR JENNA | P. 179





ARMCHAIR CARLO UPHOLSTERED | P. 178 | DINING TABLE CARLO | P. 191









TABLE ZIGGY | P. 192 | ARMCHAIR JACKY | P. 178









TABLE MIA LARGE | P. 191 | ARMCHAIR CURVE | P. 176 | CUSHION ARMCHAIR CURVE | P. 176



TABLE ABE | P. 188 | ARMCHAIR SALLY | P. 176 | CUSHION ARMCHAIR SALLY | P. 176 | CUSHION BACKREST ARMCHAIR SALLY | P. 176



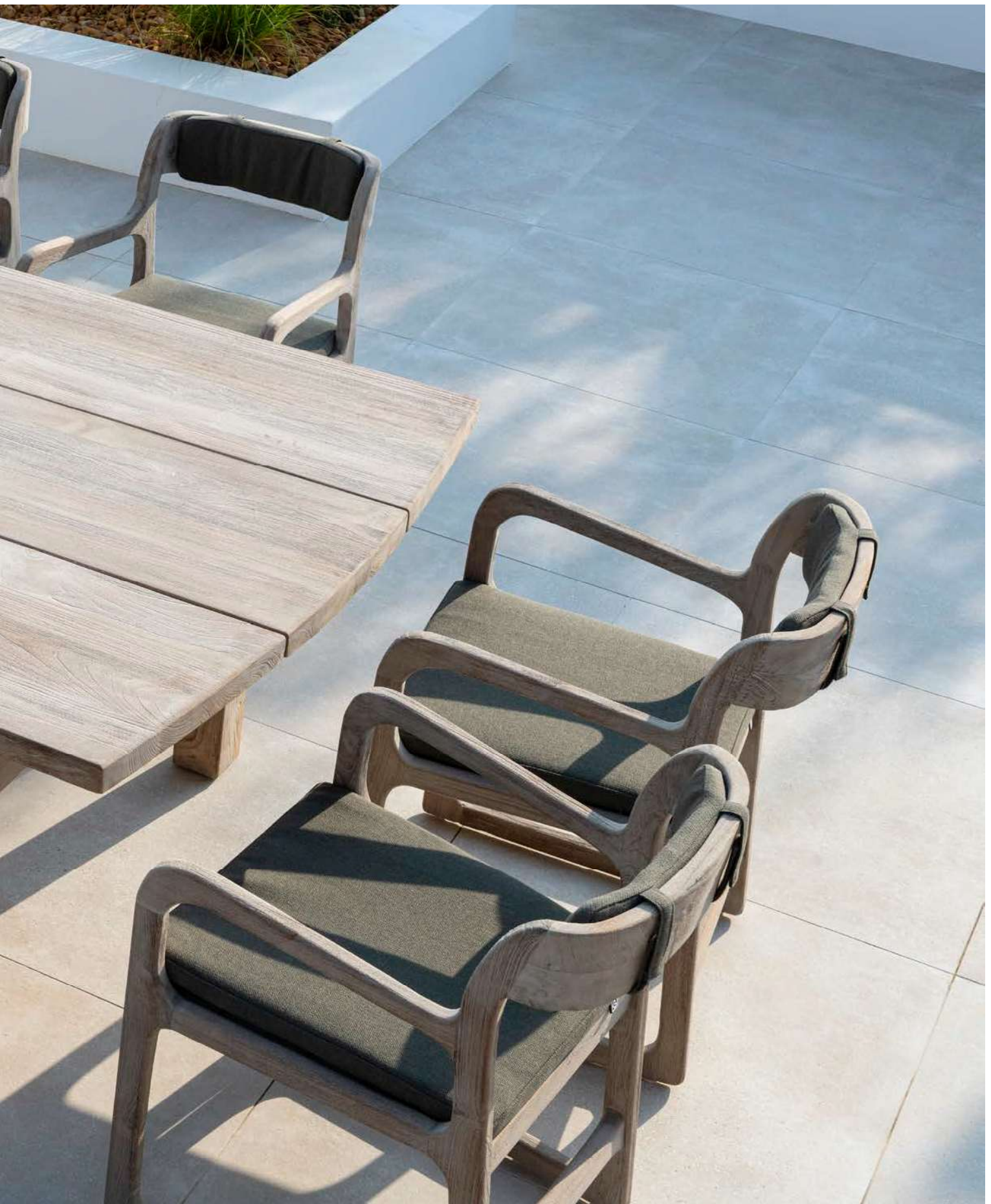






TABLE ABE | P. 188 | ARMCHAIR SALLY | P. 176 | CUSHION ARMCHAIR SALLY | P. 176  
CUSHION BACKREST ARMCHAIR SALLY | P. 176 | PLANTER BASKET JULIA MEDIUM | P. 212









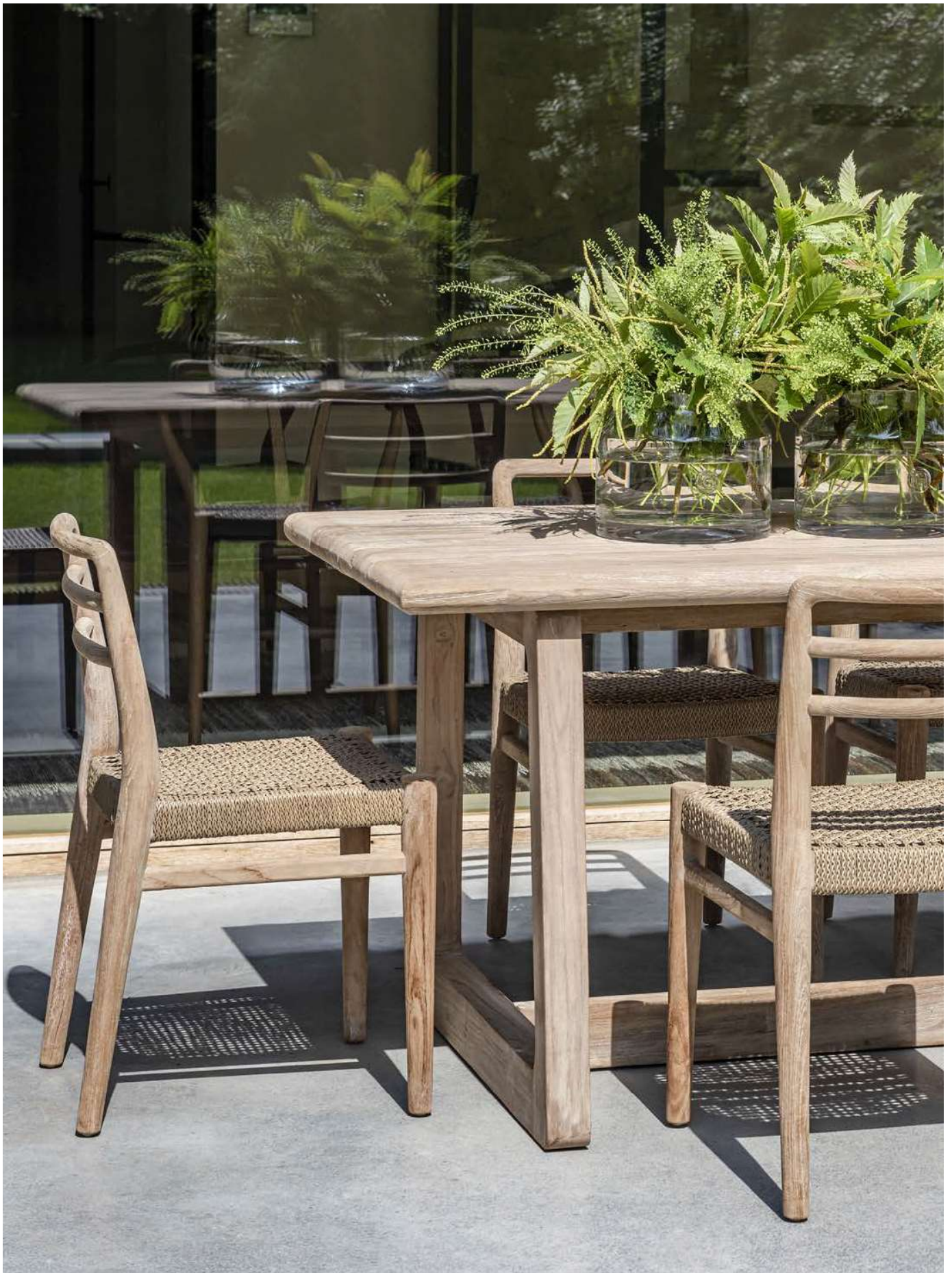


The rope and wicker detailing create an inviting embrace, while the carefully selected fabrics provide comfortable seating that beckons guests to linger and indulge in the pleasures of outdoor dining.



CHAIR JARED | P. 176 | CUSHION CHAIR JARED | P. 176 | RECTANGULAR TABLE DENNIS LARGE | P. 186













BAR CHAIR MIEKE | P. 180





BAR CHAIR MIEKE | P. 180 | RECTANGULAR BAR TABLE MIEKE | P. 189











STACKABLE ARMCHAIR JARED | P. 177 | CUSHION STACKABLE ARMCHAIR JARED | P. 177 | CUSHION BACKREST STACKABLE ARMCHAIR JARED | P. 177  
SQUARE TABLE MIGUEL | P. 188





BAR CHAIR JARED | P. 180 | CUSHION BAR CHAIR JARED | P. 180  
RECTANGULAR BAR TABLE DENNIS SMALL | P. 186 | RECTANGULAR RUG OTTO OUTDOOR BROWN | P. 215











Each outdoor table, meticulously designed and expertly finished, becomes a centerpiece of gatherings and celebrations, offering a perfect canvas for memorable moments under the open sky.



BAR CHAIR JARED | P. 180 | CUSHION BAR CHAIR JARED | P. 180 | CUSHION BACKREST BAR CHAIR JARED | P. 180  
RECTANGULAR BAR TABLE DENNIS SMALL | P. 186 | RECTANGULAR RUG OTTO OUTDOOR BROWN | P. 215









CHAIR CAROL | P. 176 | ROUND TABLE CAROL | P. 188









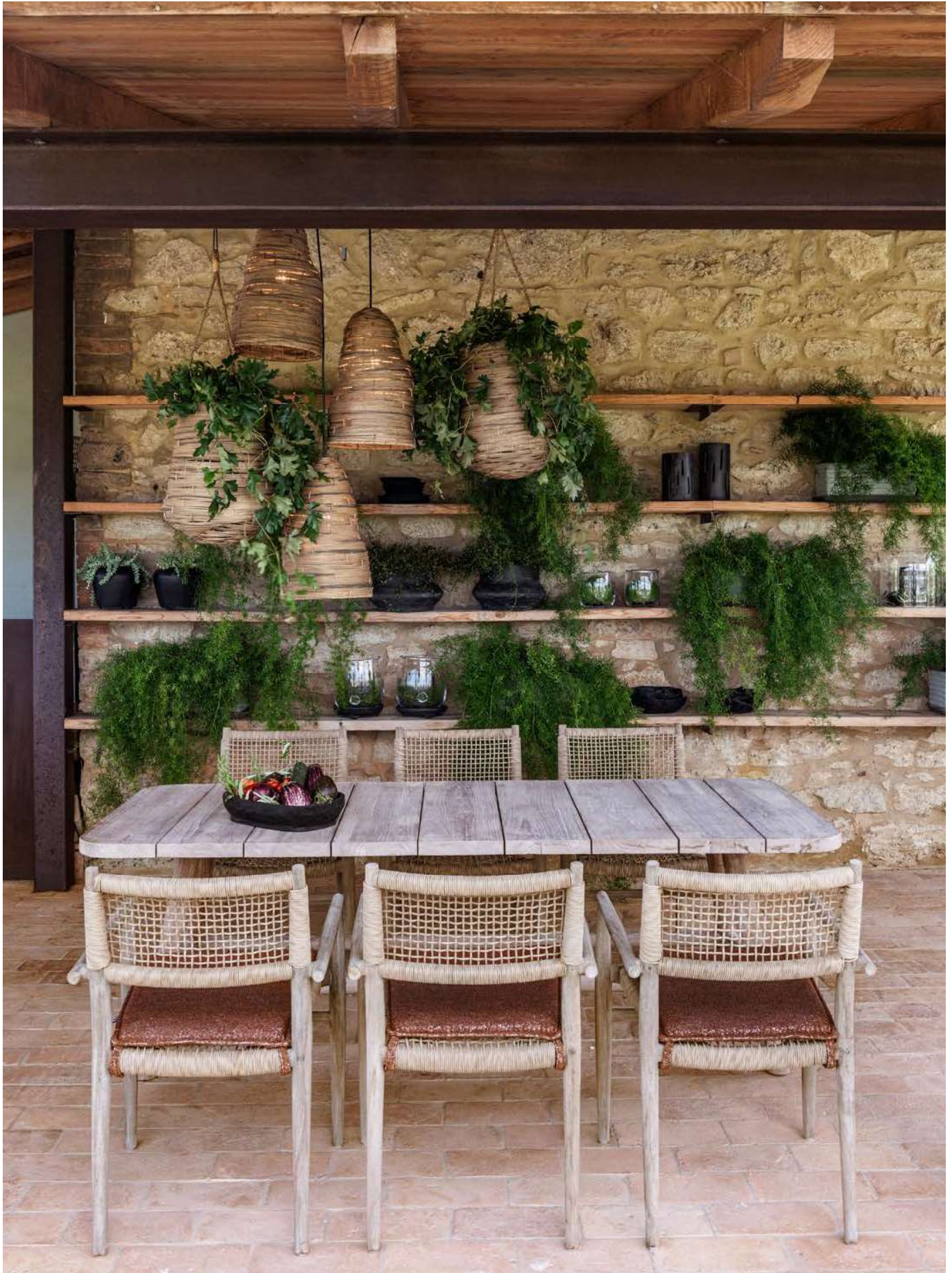
STACKABLE ARMCHAIR MIEKE | P. 179 | BISTRO TABLE MIEKE | P. 189



Whether nestled in a serene garden, overlooking a picturesque landscape, or gracing a chic terrace, our dining sets allow diners to savour the bounties of outdoor living without compromising on luxury, style and comfort.









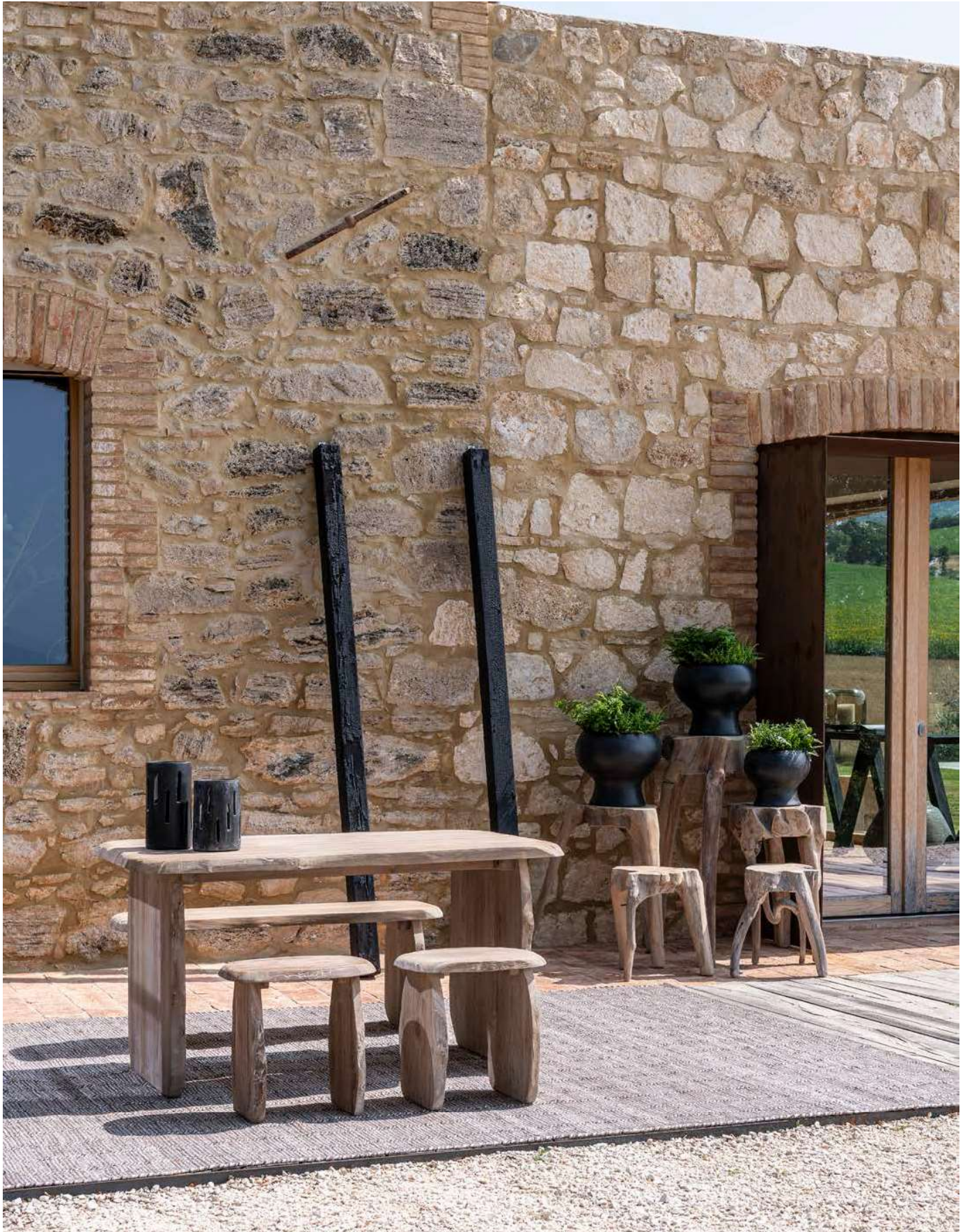


ARMCHAIR FIONA | P. 177 | CUSHION ARMCHAIR FIONA | P. 177  
TABLE MAXIMUS | P. 191









BENCH PEBBLE | P. 182 | STOOL PEBBLE | P. 181 | TABLE PEBBLE | P. 192 | COFFEE TABLE CUMI SMALL - MEDIUM - LARGE | P. 195





BAR STOOL ALEX | P. 181 | ROUND BAR TABLE ALEX | P. 187









ARMCHAIR JACKY | P. 173 | SQUARE TABLE DENNIS | P. 187

















BAR TABLE ALEXI SMALL | P. 187 | BAR STOOL ALEXI | P. 180









ARMCHAIR CHARLY | P. 178 | CUSHION ARMCHAIR CHARLY | P. 178 | ROUND TABLE ANTON LARGE | P. 190





CHAIR MARIE | P. 179 | CUSHION CHAIR MARIE | P. 179













BAR CHAIR SALLY | P. 179 | CUSHION BAR CHAIR SALLY | P. 179 | CUSHION BACKREST BAR CHAIR SALLY | P. 179  
BISTRO BAR TABLE DENNIS | P. 187 | RACK ROLF | P. 209





STACKABLE ARMCHAIR JARED | P. 177 | TABLE MIGUEL | P. 188

















CHAIR FIONA | P. 177 | CUSHION CHAIR FIONA | P. 177 | OVAL TABLE DAN SMALL | P. 190





CHAIR FIONA | P. 177 | BISTRO TABLE JACOB | P. 189









BENCH JOSSE | P. 183 | TABLE JOSSE | P. 191 | PLANTER BASKET HENDRIK SMALL | P. 211



## LOUNGE AREA

A lounge corner is a peaceful outdoor oasis that is delightful to escape to after an eventful day. The GOMMAIRE outdoor collection offers a selection of matching lounge furniture in teak, wicker, rope and fabric including sunloungers, benches, sofas and modular compositions.

Every piece of lounge furniture has its own cushion set to match the designs perfectly. These can be modified according to our extensive selection of outdoor fabrics. Discover which options are available for your design of choice in the technical specifications section on page X and pick your preferred colour and pattern on page X.

The GOMMAIRE lounge furniture is versatile and can be easily integrated in your preferred outside space. Once installed, your lounge corner will give you the opportunity to unwind completely.

Let the lounge settings on the following pages astound and inspire you. All technical specifications, fabric customisation options and maintenance advice can be found at the end of the catalogue.





THE ACTUAL COLOURS MAY VARY FROM IMAGES SHOWN,  
DIMENSIONS ARE INDICATIVE AND MAY DIFFER FROM REALITY.









2-SEATER MARIO | P. 184 | CUSHION SET 2-SEATER MARIO | P. 185 | 1-SEATER MARIO | P. 184 | CUSHION SET 1-SEATER MARIO | P. 185  
3-SEATER MARIO | P. 184 | CUSHION SET 3-SEATER MARIO | P. 185 | COFFEE TABLE NATURAL SHAPE | P. 194







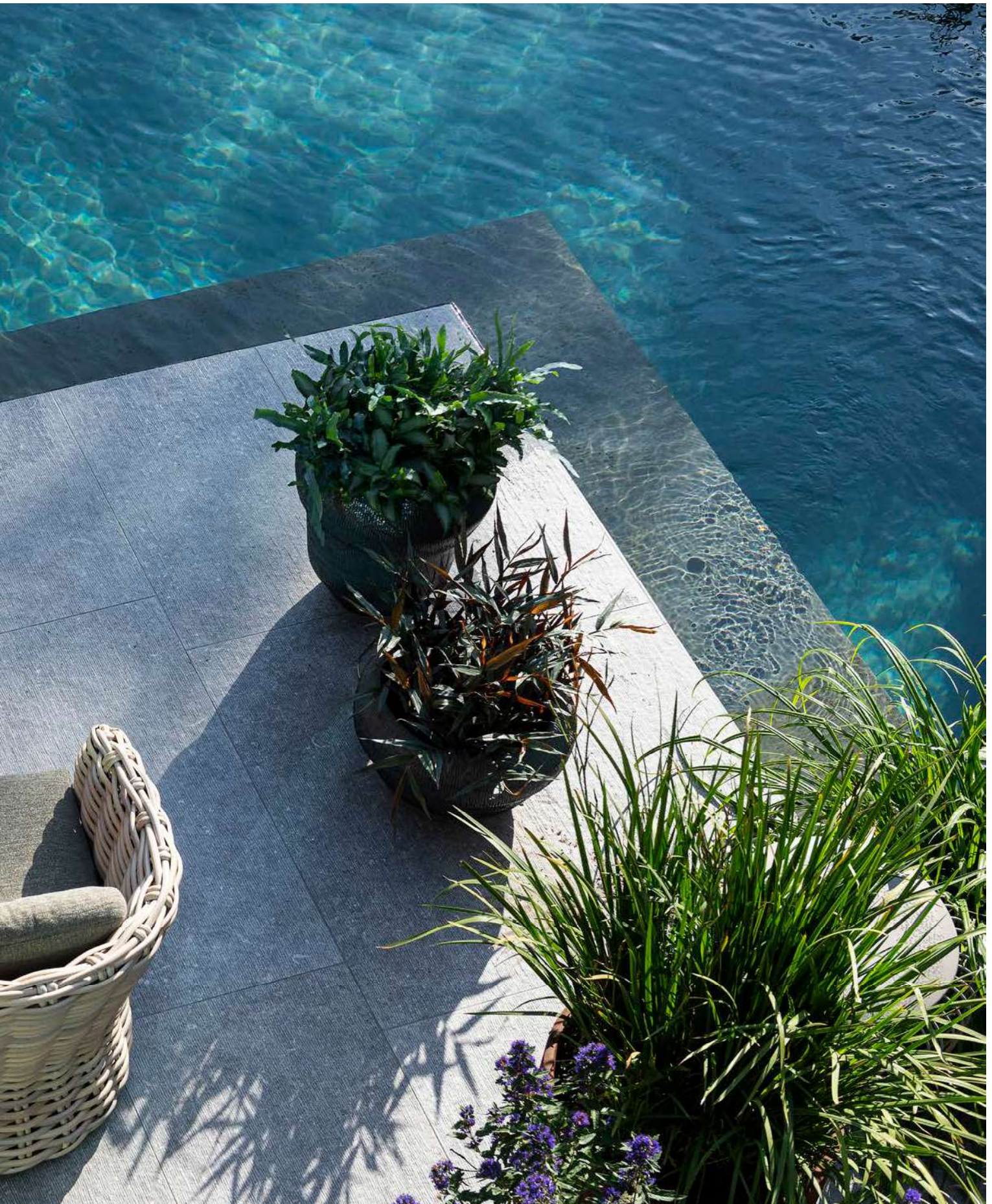






EASY CHAIR FELINE | P. 200 | CUSHION SET EASY CHAIR FELINE | P. 201 | COFFEE TABLE ROOT BALL | P. 195



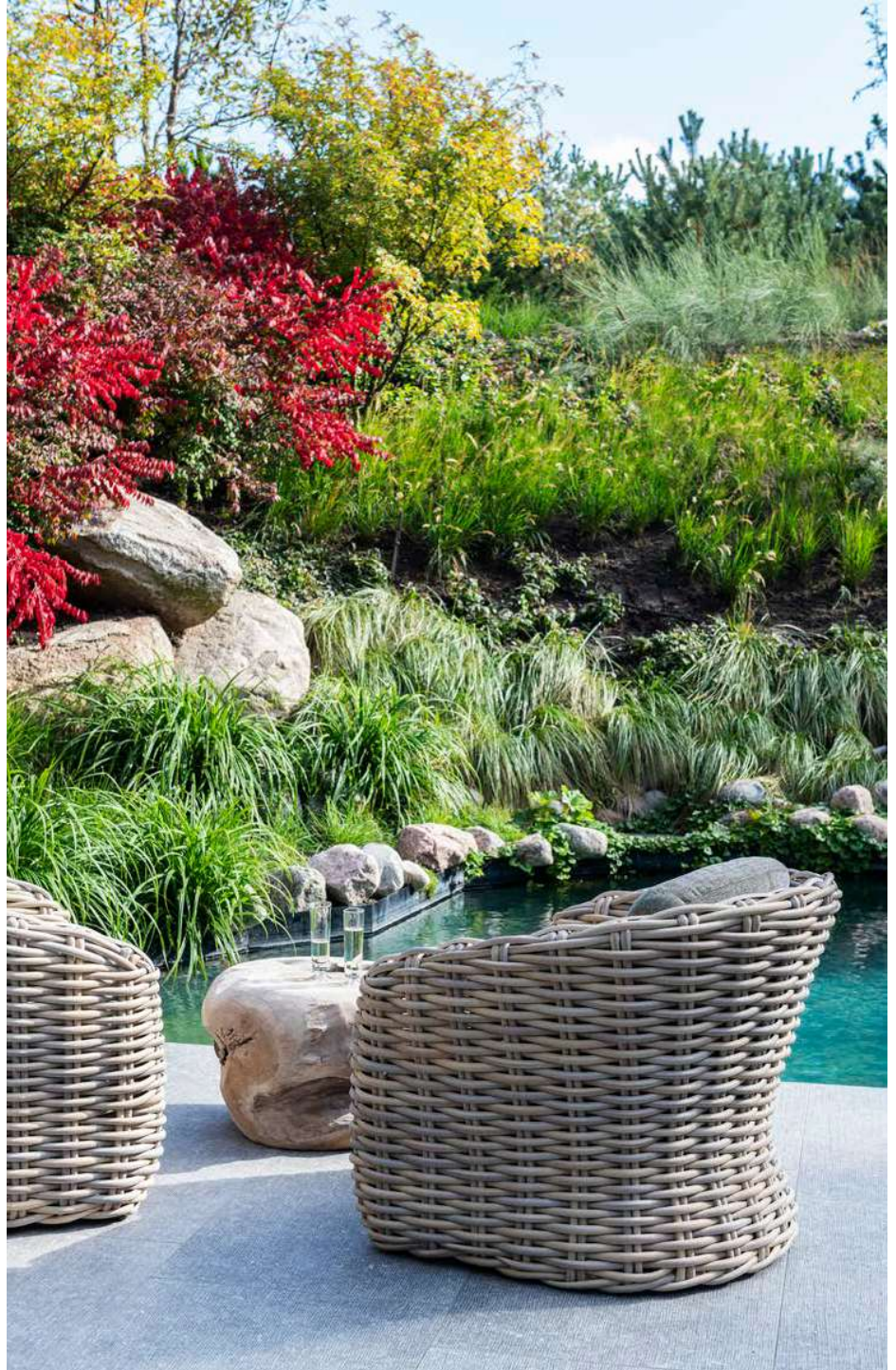








Crafted to provide a haven for relaxation and contemplation, our lounge furniture offers a calming sense of rustic elegance, combined with extraordinary comfort.







BENCH GUSTAVE SMALL | P. 182 | DECO CUSHIONS | P. 214









PARK BENCH OSLO LARGE | P. 183





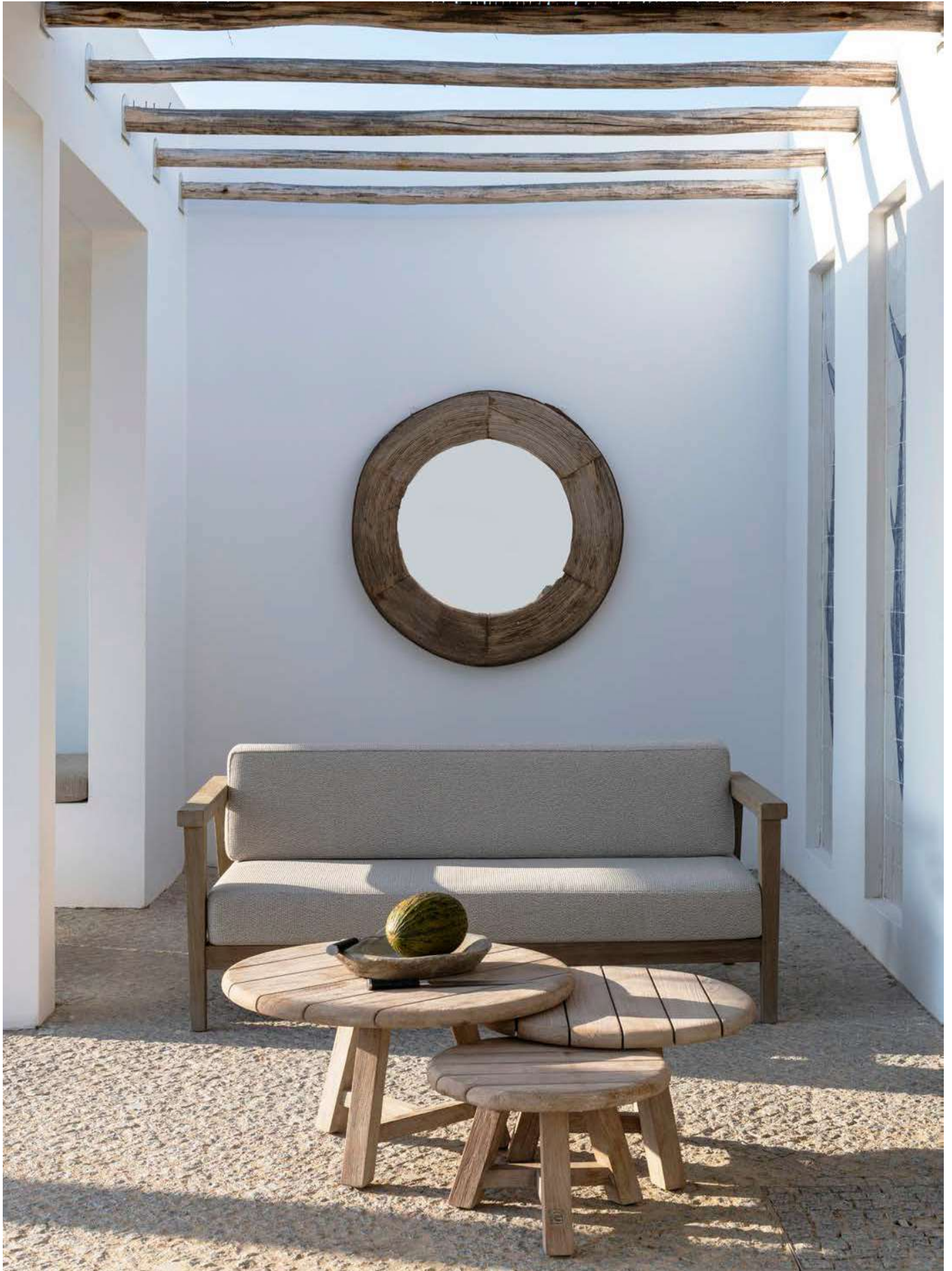


Complete with classy coffee tables, our lounge sets offer the perfect spot to read a book, enjoy a refreshing beverage, or have cherished conversations.



2-SEATER COPENHAGUE | P. 196 | CUSHION SET 2-SEATER COPENHAGUE | P. 197 | COFFEE TABLE ANTON SET OF 3 | P. 193













CENTER COPENHAGUE | OTTOMAN COPENHAGUE | CORNER COPENHAGUE | 1-SEATER COPENHAGUE | P. 196  
CUSHION SET CENTER COPENHAGUE | CUSHION OTTOMAN COPENHAGUE | CUSHION SET CORNER COPENHAGUE  
CUSHION SET 1-SEATER COPENHAGUE | P. 197 | DECO CUSHIONS | P. 214 | COFFEE TABLE COPENHAGUE | P. 193





SOFA MIA 3-SEATER | P. 204 | CUSHION SET SOFA MIA 3-SEATER | P. 205 | COFFEE TABLE DOVETAIL | P. 193 | DECO CUSHIONS | P. 214









1-SEATER ALABAMA | P. 198 | CUSHION SET 1-SEATER ALABAMA | P. 199 | RECTANGULAR COFFEE TABLE FLOOR SMALL - LARGE | P. 192-193  
2,5-SEATER ALABAMA | P. 198 | CUSHION SET 2,5-SEATER ALABAMA | P. 199 | SQUARE COFFEE TABLE FLOOR SMALL - LARGE | P. 192



The teak wood used in our coffee tables harmoniously complements the seating elements, creating a cohesive and visually striking ensemble that elevates the space.







2,5-SEATER ALABAMA | P. 198 | 1-SEATER ALABAMA | P. 198 | CUSHION SET 1-SEATER ALABAMA | P. 199













SOFA EDGE | P. 204 | CUSHION SET SOFA EDGE | P. 205 | LOW TABLE SAMBA | P. 195









SOFA EDGE | P. 204 | CUSHION SET SOFA EDGE | P. 205





1-SEATER MIEKE | P. 200 | CUSHION SET 1-SEATER MIEKE | P. 201 | L-SHAPE SOFA MIEKE | P. 200 | CUSHION SET MIEKE L-SHAPE | P. 201  
COFFEE TABLE FLOOR SET OF 3 | P. 194 | DECO CUSHIONS | P. 214 | CONSOLE ROLF | P. 209 | HANGING LAMP DISC SMALL - LARGE | P. 212  
HANGING BASKET DISC | P. 212 | PLANTER BASKET ERIC | P. 211







Whether placed on a terrace, by the poolside, or under a lush canopy of trees, our lounge collection transforms any outdoor area into a sophisticated retreat, where one can bask in the serenity of nature while indulging in the finest comforts of home.





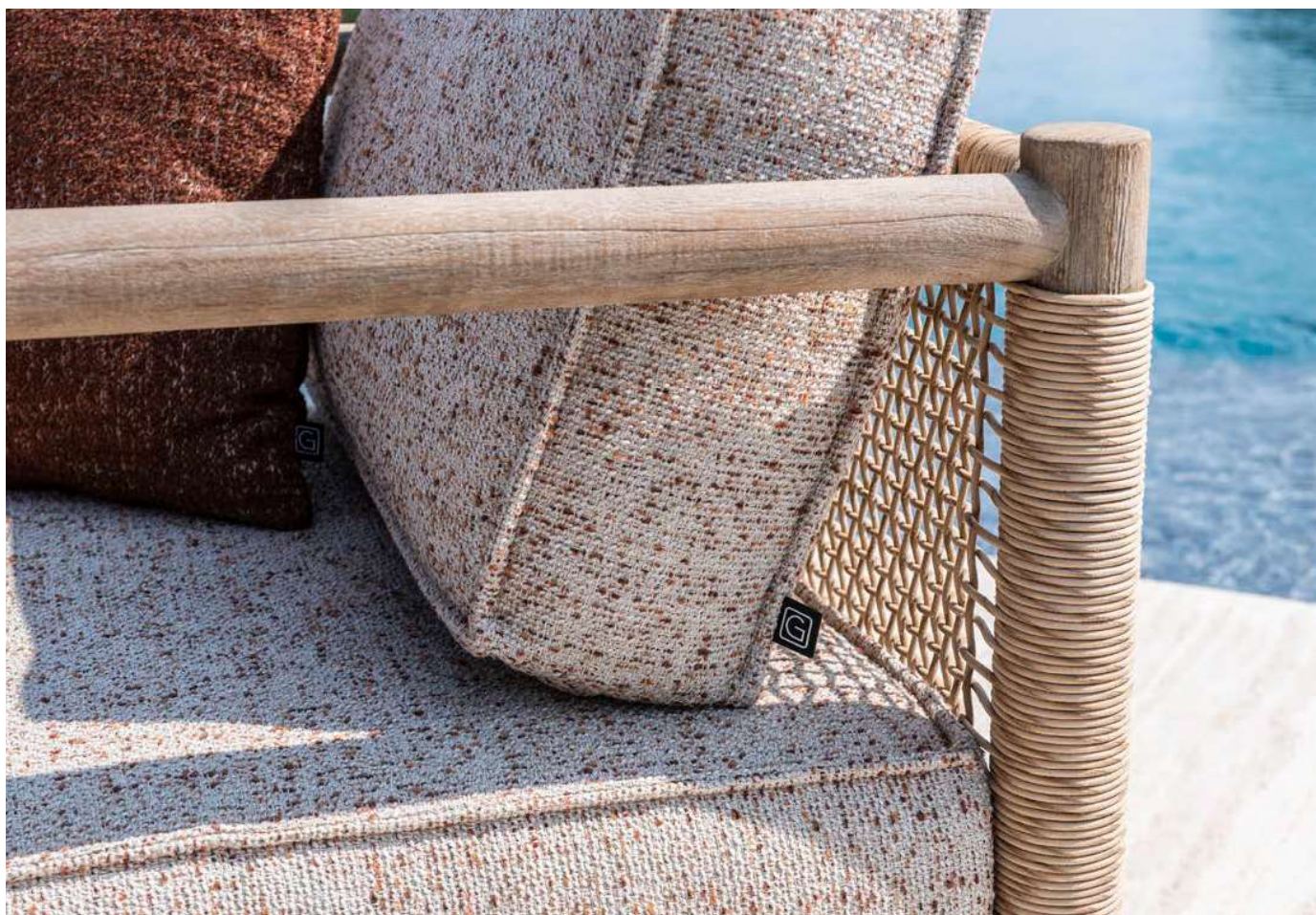


1-SEATER MIEKE | P. 200 | CUSHION SET 1-SEATER MIEKE | P. 201 | L-SHAPE SOFA MIEKE | P. 200 | CUSHION SET MIEKE L-SHAPE | P. 201  
COFFEE TABLE FLOOR SET OF 3 | P. 194 | DECO CUSHIONS | P. 214 | HANGING LAMP DISC SMALL - LARGE | P. 212 | HANGING BASKET DISC | P. 212  
PLANTER BASKET ERIC | P. 211













BENCH ALAN | P. 184 | EASY CHAIR ALAN | P. 184 | STOOL REX | P. 194









LOUNGE CAROL 1-SEATER | P. 198 | CUSHION LOUNGE CAROL 1-SEATER | P. 199 | LOUNGE CAROL 2-SEATER | P. 198  
CUSHION LOUNGE CAROL 2-SEATER | P. 199 | CHAISE LONGUE CAROL | P. 198 | CUSHION CHAISE LONGUE CAROL | P. 199  
COFFEE TABLE CAROL | P. 193 | DECO CUSHIONS | P. 214









LOUNGE MAGNUS | P. 202 | OTTOMAN MAGNUS | P. 202  
CUSHION SET LOUNGE MAGNUS LARGE | P. 202 | CUSHION OTTOMAN MAGNUS | P. 202













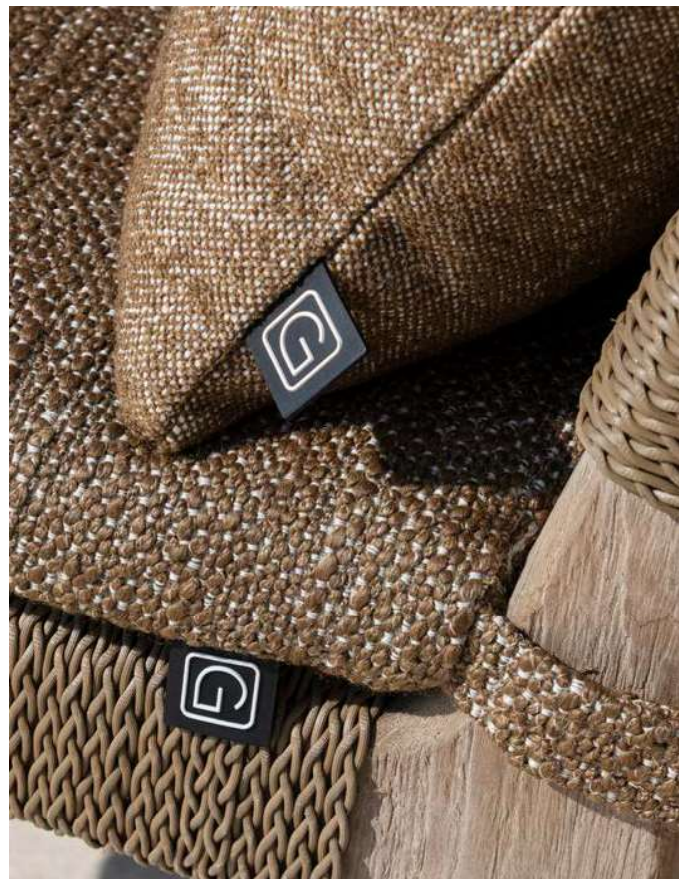
SOFA DORAN | P. 204 | CUSHION SET SOFA DORAN | P. 205 | DECO CUSHIONS | P. 214 | COFFEE TABLE ROOT BALL | P. 195





EASY CHAIR FIONA | P. 177 | CUSHION EASY CHAIR FIONA | P. 177 | SQUARE COFFE TABLE FLOOR SMALL | P. 192 | DECO CUSHIONS | P. 214











Teak's warm tones and rich textures infuse each piece with natural grace. Premium fabrics ensure a comfortable seating experience. The incorporation of rattan, rope and wicker details add a mesmerising, artisanal quality. All these elements combined create an inviting atmosphere in which one can unwind completely.







EASY CHAIR ORSO | P. 203 | FOOTREST ORSO | P. 203 | SIDE TABLE DOBLO SMALL | P. 195





















SUNNY BED COPENHAGUE | P. 204 | CUSHION SUNNY BED COPENHAGUE | P. 205 | LOW TABLE SAMBA SMALL | P. 195









SUNBED COPENHAGUE | P. 204 | CUSHION SUNBED COPENHAGUE | P. 205 | SQUARE HARD POUF WITH FLUFFY PIPING | P. 213  
SQUARE SOFT POUF WITH FLUFFY PIPING | P. 213 | DECO CUSHIONS | P. 214





SUNLOUNGER MIEKE | P. 206 | CUSHION SUNLOUNGE MIEKE | P. 207 | CUSHION HEADY | P. 214 | COFFEE TABLE ROOT CYLINDER | P. 194











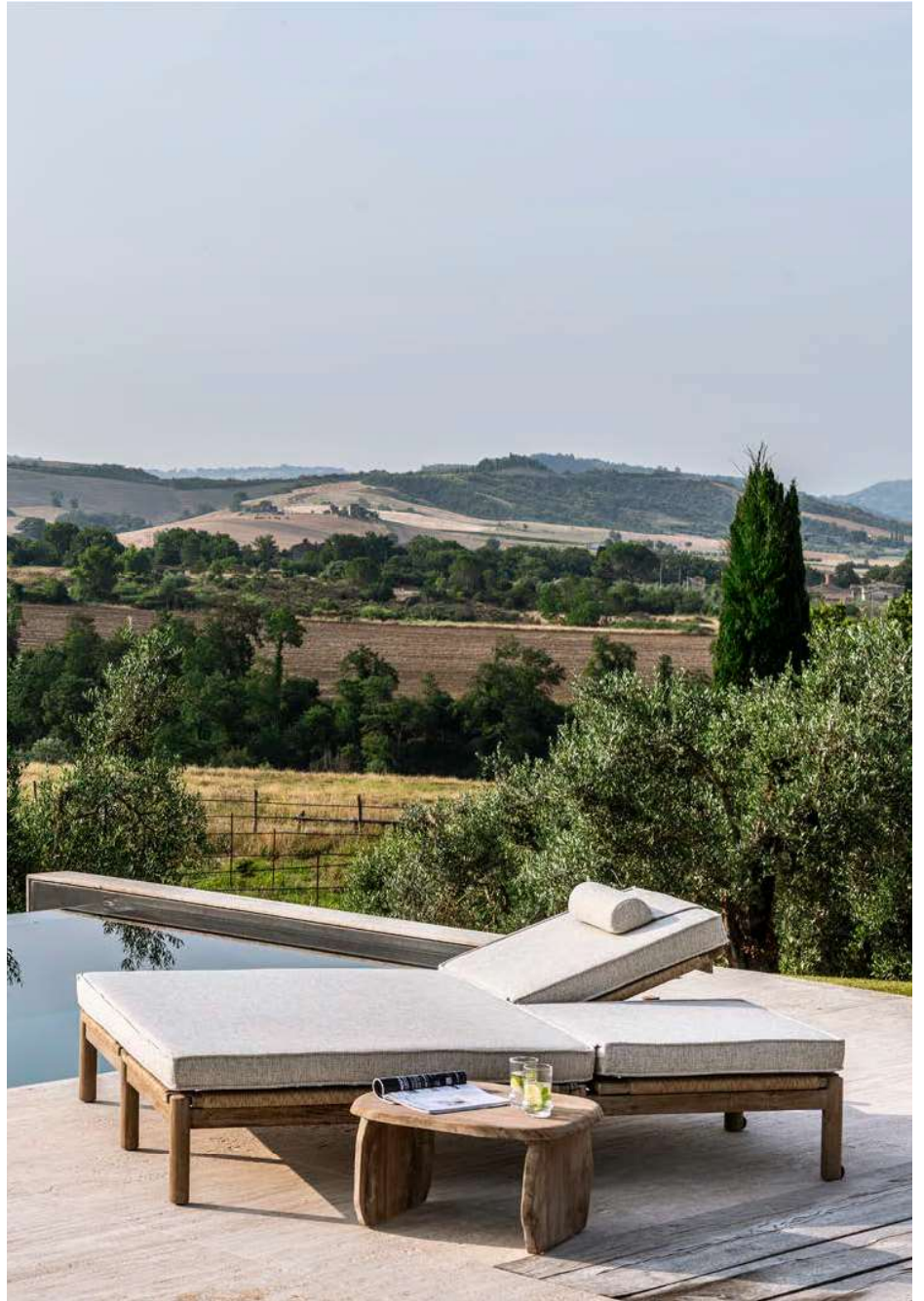


DOUBLE SUNLOUNGER MIEKE | P. 206  
CUSHION DOUBLE SUNLOUNGER MIEKE | P. 207  
SIDE TABLE PEBBLE LARGE | P. 194  
CUSHION HEADY | P. 214









DOUBLE SUNLOUNGER MIEKE | P. 206 | CUSHION DOUBLE SUNLOUNGER MIEKE | P. 207 | CUSHION HEADY | P. 214 | SIDE TABLE PEBBLE LARGE | P. 194









SUNLOUNGER LISA | P. 206





SIDE TABLE PEBBLE LARGE | P. 194 | DOUBLE SUNLOUNGER MIEKE | P. 206 | CUSHION DOUBLE SUNLOUNGER MIEKE | P. 207  
CUSHION HEADY | P. 214













DAYBED YASMIN | P. 208 | CUSHION SET DAYBED YASMIN | P. 209











## ACCESSORIES

Attention to details will yield the greatest results. That also goes for your outdoor area. The right accessories can do wonders. Wooden planters, rattan baskets, deco cushions, poufs and more. Each and every piece will imbue your garden or terrace with added character.

As a brand new addition to this collection, our outdoor carpets will add some extra warmth to your outside getaway. Made out of recycled PET bottles, they are both stylish and sustainable.

Regarding our upholstered furniture and cushions, fabrics are specially selected for outdoor usage. They are both water repellent and colour-fast. Moreover, both the yarn and the quick-dry foam filling are of the highest quality, made to last. Still, we do recommend bringing them inside during long periods of bad weather.

Most GOMMAIRE outdoor accessories will get a desirable weathered look when placed outside. However, the lifespan of natural materials is limited when exposed to certain weather conditions. The rattan basket collection, for example, should be considered as semi-outdoor and should be placed indoors when weather conditions are unfavourable.

May the decorative settings on the following pages spark your imagination and give you an appetite for creation. All technical specifications, fabric customisation options and maintenance advice can be found at the end of the catalogue.





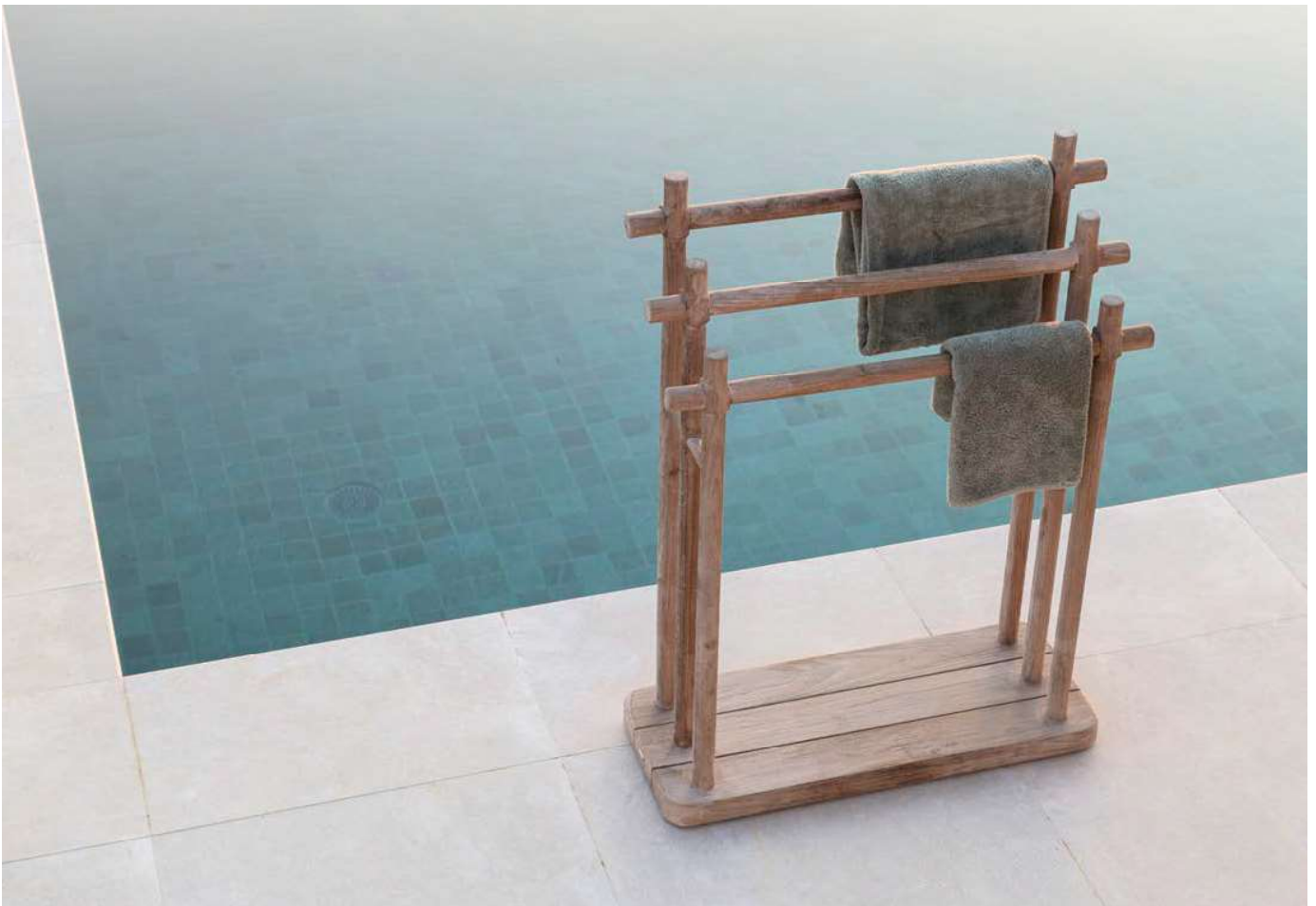
THE ACTUAL COLOURS MAY VARY FROM IMAGES SHOWN,  
DIMENSIONS ARE INDICATIVE AND MAY DIFFER FROM REALITY.







Accessories serve as accents to elevate the beauty and functionality an outdoor area already possesses. As an extension of the magnificence of the outside world, there is power in each and every detail.

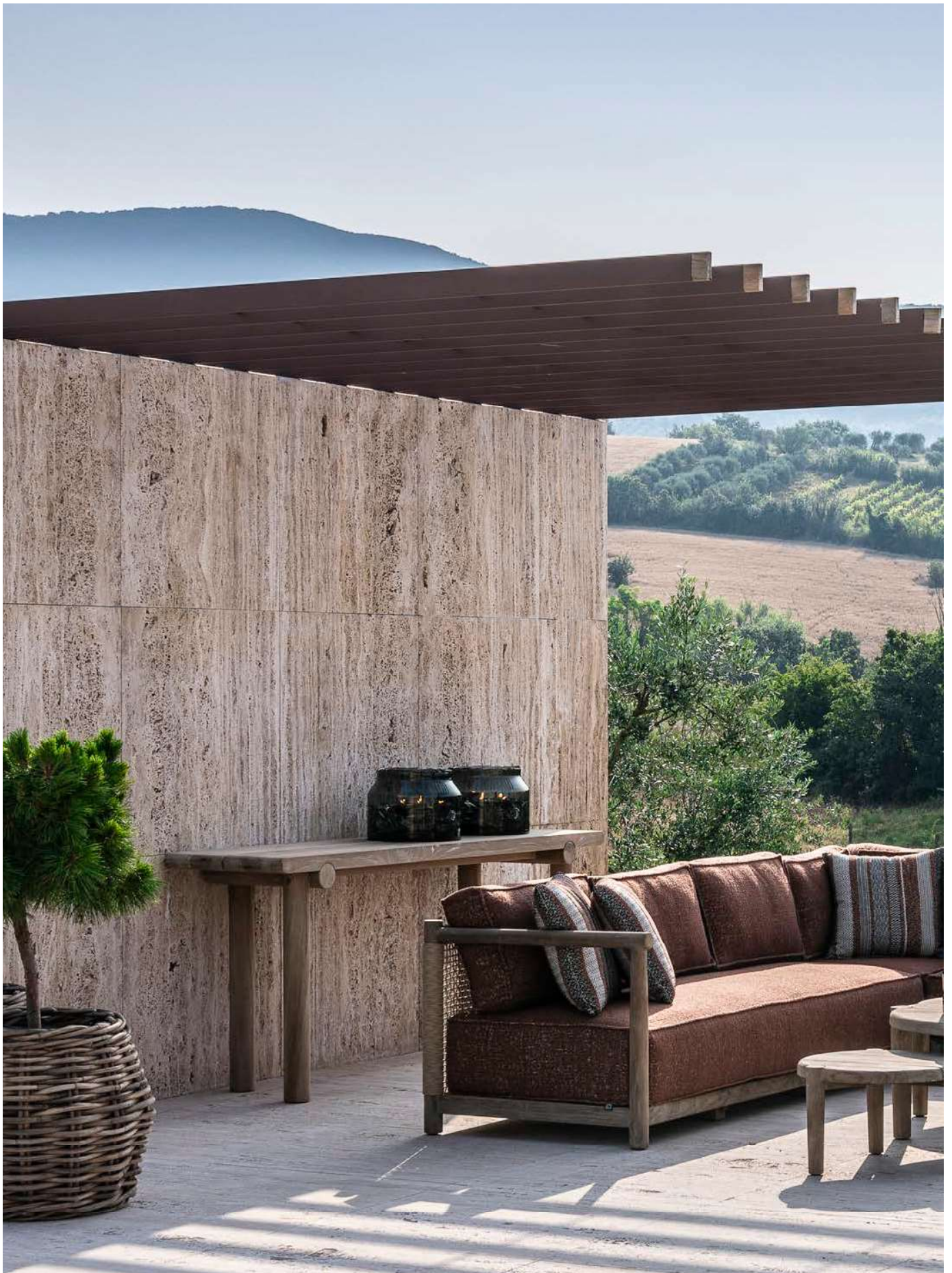






HANGING LAMP DISC SMALL - LARGE | P. 212 | HANGING BASKET DISC | P. 212 | CONSOLE ROLF | P. 209 | PLANTER BASKET ERIC | P. 211  
SOFA L-SHAPE MIEKE | P. 200 | CUSHION L-SHAPE MIEKE SOFA | P. 201 | COFFEE TABLE FLOOR SET OF 3 | P. 194 | DECO CUSHIONS | P. 214













COFFEE TABLE CUMI SMALL - MEDIUM - LARGE | P. 195









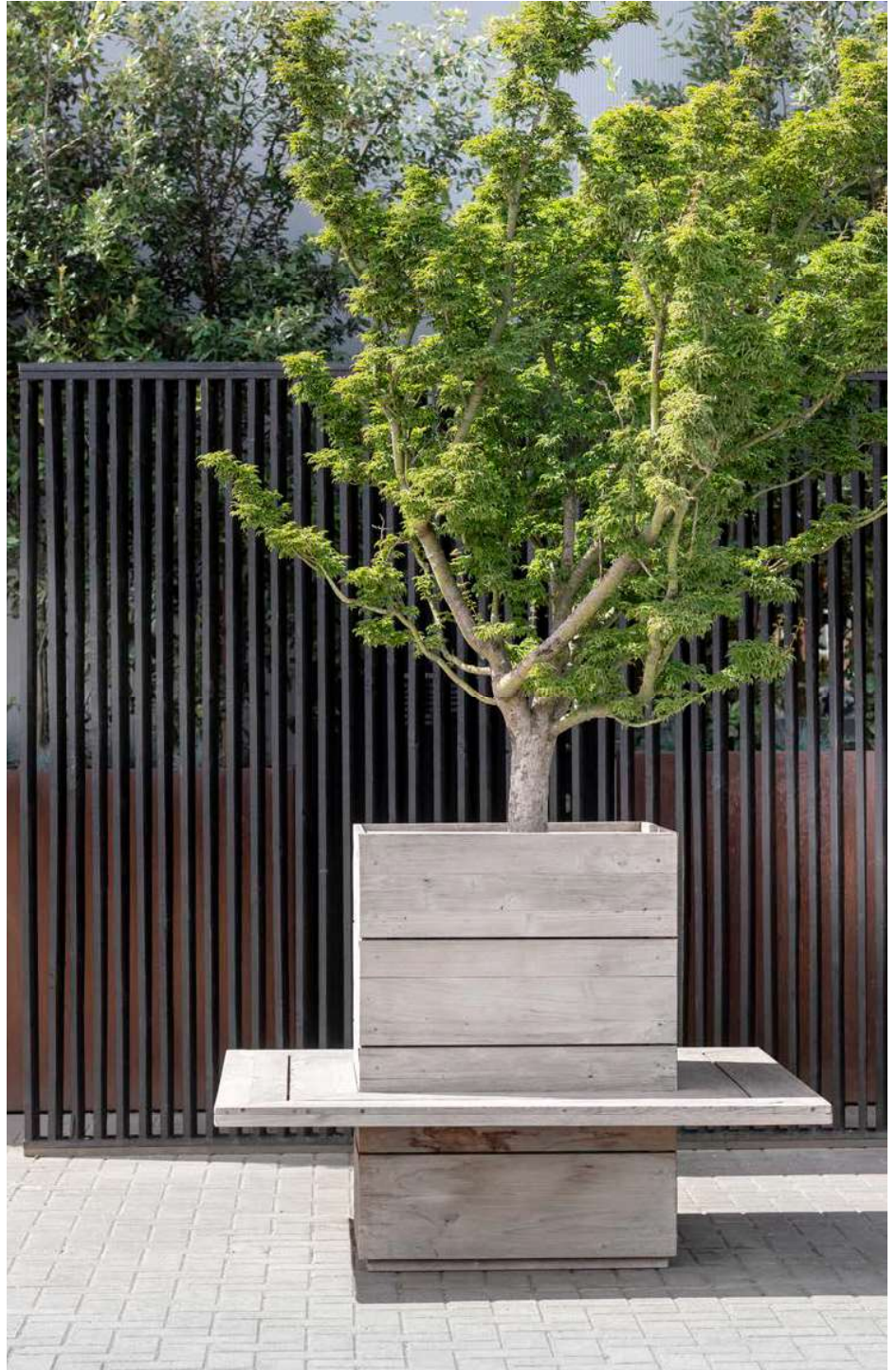
SIDE TABLE DOBLO SMALL - MEDIUM - LARGE | P. 195  
RECTANGULAR RUG OTTO OUTDOOR BROWN | P. 215







Each piece celebrates the allure of the outdoors while embodying the brand's ethos of timelessness and quality. Whether accentuating a cosy balcony, a chic terrace, or a lush garden, these accessories add an extra layer of elegance to one's outdoor living experience.



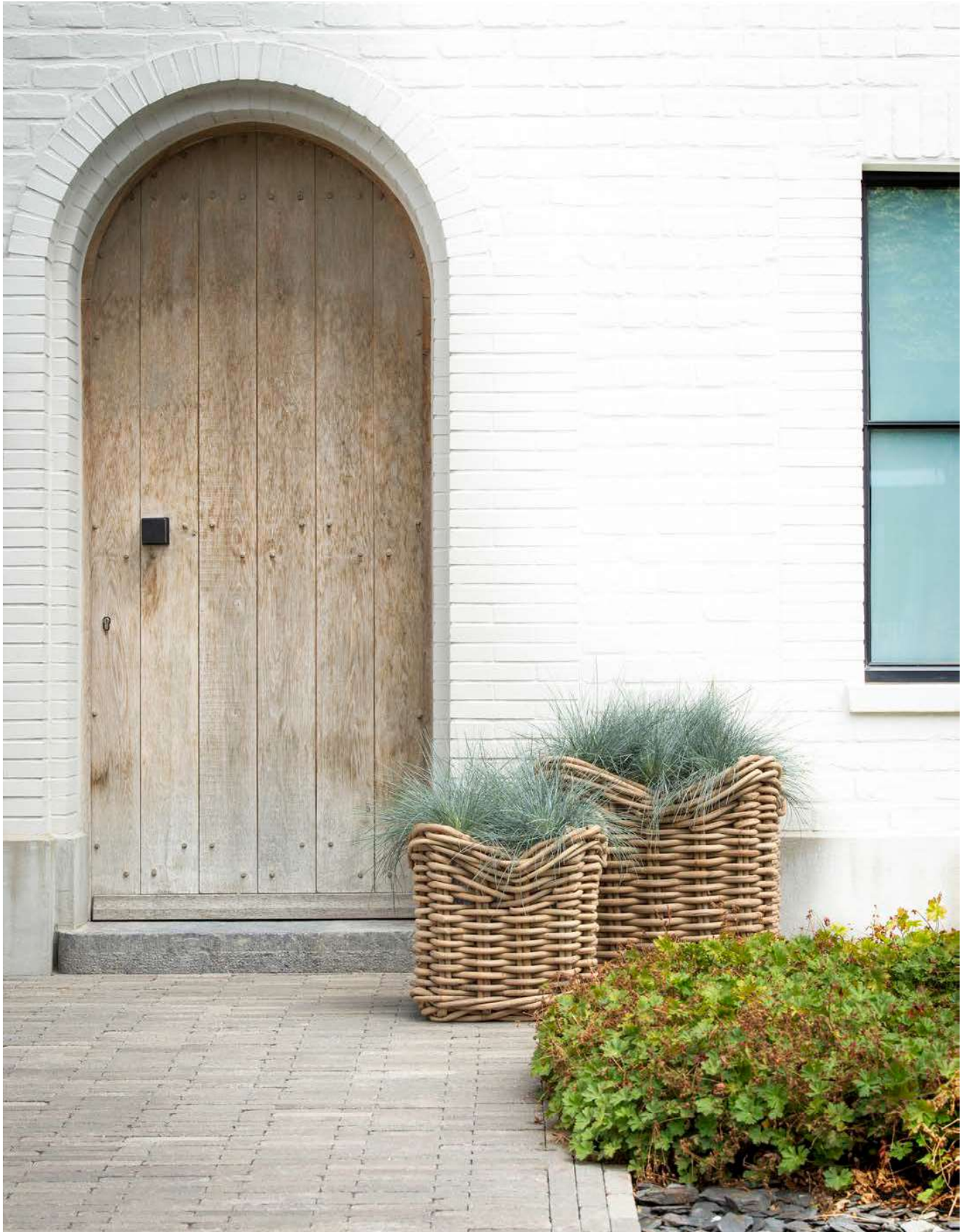
SQUARE PLANTER FERDY 50 | P. 210 | BENCH PLANTER FERDY | P. 210





PLANTER BASKET JULIA SMALL - MEDIUM - LARGE | P. 212





SQUARE PLANTER BASKET NICOLAS SET OF 2 | P. 211









CHAISE LONGUE CAROL | P. 198 | CUSHION CHAISE LONGUE CAROL | P. 199 | LOUNGE CAROL 2-SEATER | P. 198  
CUSHION LOUNGE CAROL 2-SEATER | P. 199 | COFFEE TABLE CAROL | P. 193 | HANGING BASKET LUCA | P. 212  
HANGING LAMP DEREK | P. 212 | PLANTER BASKET NELL SMALL | P. 211 | STOOL REX | P. 194





PLANTER BASKET NELL SMALL | P. 211 | PLANTER BASKET HENDRIK LARGE | P. 211



Rattan planters and baskets infuse green spaces with an extra touch of organic charm. Handwoven with expert precision, the pieces celebrate the raw elegance of rattan with diverse, intricate weaving patterns, enthralling colour variations and a myriad of shapes.







PLANTER BASKET NELSON LARGE | P. 211





HEXAGON PLANTER LOGAN LOW SMALL | P. 210 | HEXAGON PLANTER LOGAN HIGH | P. 210 | HEXAGON PLANTER LOGAN LOW LARGE | P. 210





CORNER COPENHAGUE | P. 196 | CUSHION SET CORNER COPENHAGUE | P. 197 | CENTER COPENHAGUE | P. 196 | CUSHION SET CENTER COPENHAGUE | P. 197  
COFFEE TABLE NATURAL SHAPE | P. 194 | SQUARE SOFT POUF SMALL - LARGE WITHOUT PIPING | P. 213 | DECO CUSHIONS | P. 214





SQUARE POUF / SIDETABLE | P. 213 | SQUARE POUF / SIDE TABLE WITH STONE TOP | P. 213 | SOFIA MIA 3-SEATER | P. 204  
CUSHION SET SOFA MIA 3-SEATER | P. 205 | DECO CUSHIONS | P. 214 | COFFEE TABLE PUZZLE SMALL - LARGE | P. 194







Cushions of first-rate quality, made from weather-resistant fabrics and a quick-dry foam filling add not only a burst of colour and pattern, but also provide an extra layer of comfort, ensuring that moments of relaxation become even more soothing.





## FABRIC SELECTION

All GOMMAIRE fabrics are designed and made in Europe with the highest quality in mind. Only the best yarn with a natural, luxurious feel is used and expertly woven into unique patterns that fit our designs perfectly.

Moreover, we update our fabric selection regularly, adding new and fresh colours and patterns to complement our furniture in the best possible manner.

Treatment for water-repellency and colour fastness is applied to fabrics designated for outdoor usage, as well as the addition of a quick-dry foam filling.

A wide range of outdoor fabrics is available in various price categories. Please consult the following pages for our current fabric range. The technical specifications in the next section reveal which fabric categories are applicable to which designs.







OUTDOOR - FABRIC SELECTION



KBASIC LA CONCHA COL. 182



KNELOUT 02



KNELOUT 05



KNELOUT 07  
AVAILABLE TILL END  
OF STOCK



KNELOUT 08  
AVAILABLE TILL END  
OF STOCK



KNELOUT 09  
AVAILABLE TILL END  
OF STOCK



KNELOUT 11



KNELOUT 13



KNELOUT 16  
AVAILABLE TILL END  
OF STOCK



KNELOUT 17  
AVAILABLE TILL END  
OF STOCK



KNELOUT LUX 18  
AVAILABLE TILL END  
OF STOCK



KNELOUT LUX 19  
AVAILABLE TILL END  
OF STOCK



KNELOUT LUX 20



KNELOUT LUX 21  
AVAILABLE TILL END  
OF STOCK



KNELOUT LUX 22  
AVAILABLE TILL END  
OF STOCK



KNELOUT LUX 24  
AVAILABLE TILL END  
OF STOCK



OUTDOOR - FABRIC SELECTION



KNELOUT LUX 26



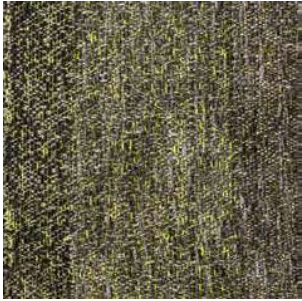
KNELOUT LUX 27



KNELOUT LUX 28



KNELOUT LUX 29  
AVAILABLE TILL END  
OF STOCK



KNELOUT LUX 30  
AVAILABLE TILL END  
OF STOCK



KTEXTOUT 01



KTEXTOUT 02



KTEXTOUT 03



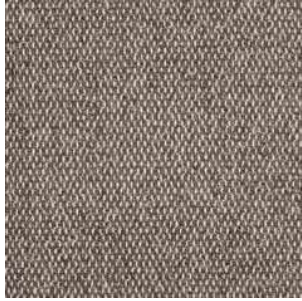
KTEXTOUT BLU 01 (CRIB 5)



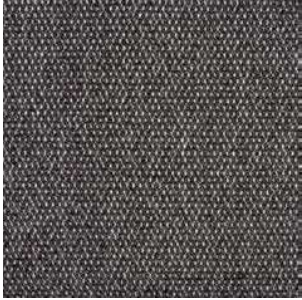
KTEXTOUT BLU 02 (CRIB 5)



KTEXTOUT BLU 03 (CRIB 5)



KTEXTOUT BLU 04 (CRIB 5)



KTEXTOUT BLU 05 (CRIB 5)



KTEXTOUT BLU 06 (CRIB 5)



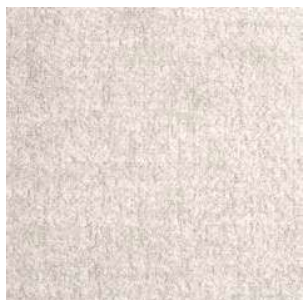
KTEXTOUT BLU 07 (CRIB 5)



KTEXTOUT BLU 08 (CRIB 5)



OUTDOOR - FABRIC SELECTION



KTEXTOUT TESSU 01



KTEXTOUT TESSU 02



KTEXTOUT TESSU 03



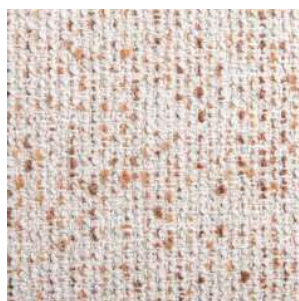
KTEXTOUT TESSU 04



KTEXTOUT TESSU 05



KTEXTOUT TESSU 06



KTEXTOUT TESSU 07



KTEXTOUT TESSU 08



KTEXTOUT TESSU 09



KTEXTOUT TESSU 10



KTEXTOUT TESSU 11



KTEXTOUT TESSU 12



KTEXTOUT TESSU 13



KTEXTOUT TESSU 14



KTEXTOUT TESSU 15



KLIMO CICO 3  
AVAILABLE TILL END  
OF STOCK



OUTDOOR - FABRIC SELECTION



KLIMO CICO 6  
AVAILABLE TILL END  
OF STOCK



KLIMO CICO 7  
AVAILABLE TILL END  
OF STOCK



KLIMO CICO 11  
AVAILABLE TILL END  
OF STOCK



KLIMO LATT 20









## **TECHNICAL SPECIFICATIONS**

On the following pages, you will find the complete outdoor collection, including all technical details.

You can use the specifications to see whether your selected item has the right dimensions to fit within the desired space. The length, width and height are specified.

Moreover, it will tell you out of which material or materials the item is made.

Lastly, you can use the designated codes and fabric overview in the previous section to see what options you have in terms of upholstery or cushion covers.

Should you have any additional questions, please do not hesitate to contact your local GOMMAIRE retailer or our service department.

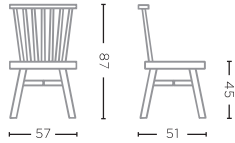


CHAIRS, BAR CHAIRS & BENCHES - TECHNICAL SPECIFICATIONS



**CHAIR CAROL**  
G600-NAT (P. 46-47)

TEAK NATURAL GREY  
W57 X D51 X H87 CM

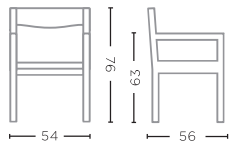


**CUSHION CHAIR CAROL**  
G600-KBASIC / KLIMO / KNELOUT /  
KNELOUTLUX / KTEXTOUT\*  
W42 X D47 X H4 CM



**ARMCHAIR CURVE**  
G057A-NAT (P. 26-27)

RECLAIMED TEAK NATURAL GREY  
W54 X D56 X H76 CM

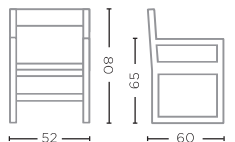


**CUSHION ARMCHAIR CURVE**  
G057A-KBASIC / KLIMO / KNELOUT /  
KNELOUTLUX / KTEXTOUT\*  
W47 X D46 X H4,5 CM



**ARMCHAIR SALLY**  
G388-NAT (P. 28-29, 30-31)

RECLAIMED TEAK NATURAL GREY  
W52 X D60 X H80 CM



**CUSHION ARMCHAIR SALLY**  
G388-KBASIC / KLIMO / KNELOUT /  
KNELOUTLUX / KTEXTOUT\*  
W44 X D49 X H4 CM

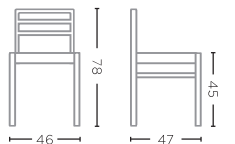


**CUSHION BACKREST ARMCHAIR SALLY**  
G388-BACK-KBASIC / KLIMO /  
KNELOUT / KNELOUTLUX /  
KTEXTOUT\*  
W39 X D2 X H12 CM



**CHAIR JARED**  
G405-PE-AW (P. 34-35)

TEAK NATURAL GREY /  
PE ANTIQUE WEED  
W46 X D47 X H78 CM



**CUSHION CHAIR JARED**  
G405-KBASIC / KLIMO / KNELOUT /  
KNELOUTLUX / KTEXTOUT\*  
W44 X D40 X H3 CM



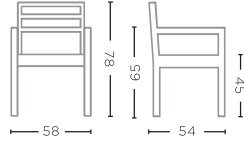
**CUSHION BACKREST CHAIR JARED**  
G405-BACK-KBASIC / KLIMO /  
KNELOUT / KNELOUTLUX /  
KTEXTOUT\*  
W34 X D2 X H15 CM





**STACKABLE ARMCHAIR JARED**  
G405A-PE-AW (P. 40-41, 68-69)

TEAK NATURAL GREY /  
PE ANTIQUE WEED  
W58 X D54 X H78 CM



**CUSHION STACKABLE ARMCHAIR JARED**

G405A-KBASIC / KLIMO /  
KNELOUT / KNELOUTLUX /  
KTEXTOUT\*  
W43 X D45 X H2 CM



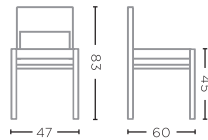
**CUSHION BACKREST STACKABLE ARMCHAIR JARED**

G405A-BACK-KBASIC / KLIMO /  
KNELOUT / KNELOUTLUX /  
KTEXTOUT\*  
W44 X D2 X H15 CM



**CHAIR FIONA**  
G510-PE-AW (P. 72-73)

TEAK NATURAL GREY /  
PE ANTIQUE WEED  
W47 X D60 X H83 CM



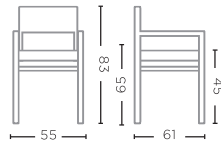
**CUSHION CHAIR FIONA**

G510-KBASIC / KLIMO / KNELOUT /  
KNELOUTLUX / KTEXTOUT\*  
W48 X D48 X H3 CM



**ARMCHAIR FIONA**  
G510A-PE-AW (P. 32-33, 52-53, 70-71)

TEAK NATURAL GREY /  
PE WICKER ANTIQUE WEED  
W55 X D61 X H83 CM



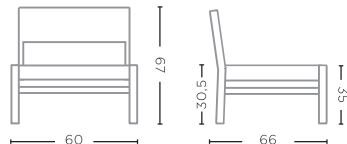
**CUSHION ARMCHAIR FIONA**

G510A-KBASIC / KLIMO / KNELOUT /  
KNELOUTLUX / KTEXTOUT\*  
W55 X D48 X H3 CM



**EASY CHAIR FIONA**  
G510E-PE-AW (P. 118-119)

TEAK NATURAL GREY /  
PE ANTIQUE WEED  
W60 X D66 X H67 CM



**CUSHION EASY CHAIR FIONA**

G510E-KBASIC / KLIMO / KNELOUT /  
KNELOUTLUX / KTEXTOUT\*  
W60 X D52 X H4 CM

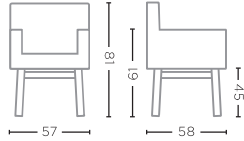


CHAIRS, BAR CHAIRS & BENCHES - TECHNICAL SPECIFICATIONS



**ARMCHAIR JACKY**  
G111-PE-CHAR (P. 24-25, 56-57)

TEAK NATURAL GREY /  
PE CHARCOAL  
W57 X D58 X H81 CM

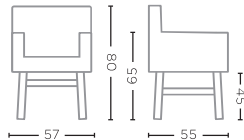


**CUSHION ARMCHAIR JACKY**  
G111-KBASIC / KLIMO / KNELOUT /  
KNELOUTLUX / KTEXTOUT\*  
W43 X D44 X H5 CM



**ARMCHAIR CHARLY**  
G419-PE-BGR (P. 62-63)

TEAK NATURAL GREY /  
PE WICKER BROWN GREEN  
W57 X D55 X H80 CM

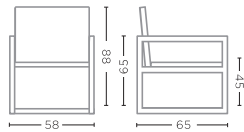


**CUSHION ARMCHAIR CHARLY**  
G419-KBASICQD / KLIMOQD /  
KNELOUTLUXQD / KNELOUTQD /  
KTEXTOUTQD\*  
W38 X D44 X H3 CM



**ARMCHAIR CARLO UPHOLSTERED**  
G555A-SUNCANVASQD (P. 20-21, 23)

QUICK DRY FOAM  
W58 X D65 X H88 CM



PAPYRUS



ASH



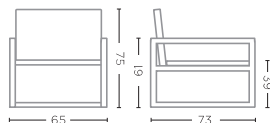
MOSS

The colours shown are indicative and may differ from reality.  
Due to their recycled nature, variations in weave or speckles may  
occur in the Sunbrella fabrics.



**EASY CHAIR CARLO**  
G555E-RO-NAT (P. 16-17, 18-19)

TEAK NATURAL GREY / ROPE  
W65 X D73 X H75 CM



**CUSHION SET CARLO EASY CHAIR**  
G555E-KBASIC / KLIMO / KNELOUT /  
KNELOUTLUX / KTEXTOUT\*

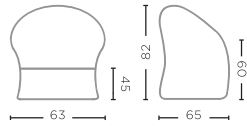
W48,5 X D55 X H3 CM  
W48,5 X D12 X H34 CM





**ARMCHAIR JENNA**  
G674-CLR-PE (P. 22)

CL PE WICKER NATURAL  
W63 X D65 X H82 CM

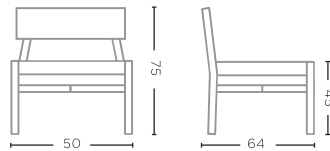


**CUSHION ARMCHAIR JENNA**  
G674-KBASIC / KLIMO / KNELOUT /  
KNELOUTLUX / KTEXTOUT\*  
W44 X D50 X H4 CM



**CHAIR MARIE**  
G096-PE-NAT (P. 64-65)

TEAK NATURAL GREY /  
PE WICKER SAND  
W50 X D64 X H75 CM

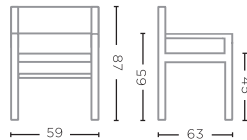


**CUSHION CHAIR MARIE**  
G096-KBASIC / KLIMO / KNELOUT /  
KNELOUTLUX / KTEXTOUT\*  
W49 X D47 X H4 CM



**STACKABLE ARMCHAIR MIEKE**  
G657-PE-NAT (P. 48-49, 50-51)

TEAK NATURAL GREY /  
PE WICKER SAND  
W59 X D63 X H87 CM

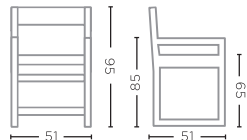


**CUSHION STACKABLE ARMCHAIR MIEKE**  
G657-KBASIC / KLIMO / KNELOUT /  
KNELOUTLUX / KTEXTOUT\*  
W48,5 X D51 X H3,5 CM



**BAR CHAIR SALLY**  
G388B-NAT (P. 66)

TEAK NATURAL GREY  
W51 X D51 X H95 CM



**CUSHION BAR CHAIR SALLY**  
G388B-KBASIC / KLIMO / KNELOUT /  
KNELOUTLUX / KTEXTOUT\*  
W46 X D44 X H4,5 CM



**CUSHION BACKREST BAR CHAIR SALLY**  
G388B-BACK-KBASIC / KLIMO /  
KNELOUT / KNELOUTLUX /  
KTEXTOUT\*  
W37 X D4 X H14 CM

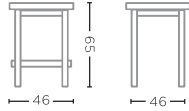


CHAIRS, BAR CHAIRS & BENCHES - TECHNICAL SPECIFICATIONS



**BAR STOOL ALEXI**  
G256B-NAT (P. 60-61)

TEAK NATURAL GREY  
W46 X D46 X H65 CM

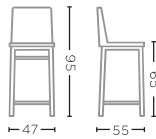


**CUSHION BAR STOOL ALEXI**  
G256B-KBASIC / KLIMO / KNELOUT /  
KNELOUTLUX / KTEXTOUT\*  
W40 X D40 X H2 CM



**BAR CHAIR SIENNA**  
G354B-PE-CHAR (P. 58)

TEAK NATURAL GREY /  
PE CHARCOAL  
W47 X D55 X H95 CM

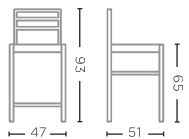


**CUSHION BAR CHAIR SIENNA**  
G354B-KBASIC / KLIMO /  
KNELOUT / KNELOUTLUX /  
KTEXTOUT\*  
W47 X D43 X H3 CM



**BAR CHAIR JARED**  
G405B-PE-AW (P. 42-43, 44-45)

TEAK NATURAL GREY /  
PE ANTIQUE WEED  
W47 X D51 X H93 CM



**CUSHION BAR CHAIR JARED**  
G405B-KBASIC / KLIMO /  
KNELOUT / KNELOUTLUX /  
KTEXTOUT\*  
W46 X D41 X H2 CM

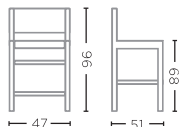


**CUSHION BACKREST BAR CHAIR JARED**  
G405B-BACK-KBASIC / KLIMO /  
KNELOUT / KNELOUTLUX /  
KTEXTOUT\*  
W33 X D2 X H16 CM



**BAR CHAIR MIEKE**  
G720B-PE-NAT (P. 3, 36-37, 38-39)

TEAK NATURAL GREY /  
PE WICKER SAND  
W47 X D51 X H96 CM



**CUSHION BAR CHAIR MIEKE**  
G720B-KBASIC / KLIMO /  
KNELOUT / KNELOUTLUX /  
KTEXTOUT\*  
W46 X D44 X H3,5 CM





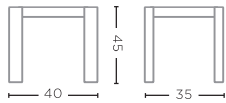
**BAR STOOL ALEX**  
G671-NAT (P. 55)

TEAK NATURAL GREY  
Ø34 X H65 CM



**BENCH SANDY SMALL**  
G552S-BENCH-NAT

TEAK NATURAL GREY  
W40 X D35 X H45 CM

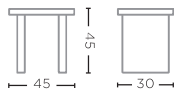


**CUSHION SANDY BENCH SMALL**  
G552S-BENCH-KBASIC / KLIMO /  
KNELOUT / KNELOUTLUX /  
KTEXTOUT\*  
W35 X D35 X H3 CM



**STOOL PEBBLE**  
G662-NAT (P. 54)

TEAK NATURAL GREY  
W45 X D30 X H45 CM





CHAIRS, BAR CHAIRS & BENCHES - TECHNICAL SPECIFICATIONS



**BENCH SANDY LARGE**  
G552L-BENCH-NAT

TEAK NATURAL GREY  
W120 X D35 X H45 CM



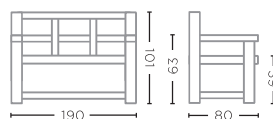
**BENCH PEBBLE**  
G662-BENCH-NAT (P. 54)

TEAK NATURAL GREY  
W120 X D30 X H45 CM



**BENCH GUSTAVE SMALL**  
G059S-BENCH-NAT (P. 86-87)

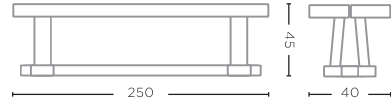
TEAK NATURAL GREY  
W190 X D80 X H101 CM



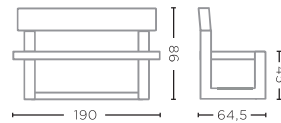




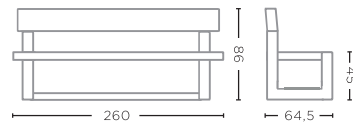
**BENCH JOSSE**  
G055-BENCH-NAT (P. 74-75)  
TEAK NATURAL GREY  
W250 X D40 X H45 CM



**PARK BENCH OSLO SMALL**  
G658S-NAT  
TEAK NATURAL GREY  
W190 X D64,5 X H86 CM



**PARK BENCH OSLO LARGE**  
G658L-NAT (P. 88-89)  
TEAK NATURAL GREY  
W260 X D64,5 X H86 CM



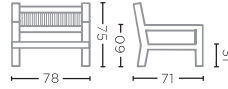


CHAIRS, BAR CHAIRS & BENCHES - TECHNICAL SPECIFICATIONS



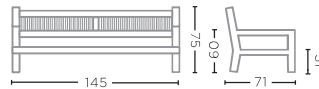
**1-SEATER MARIO**  
G631-RO-NAT (P. 78-79, 80-81)

TEAK NATURAL GREY / ROPE  
W78 X D71 X H75 CM



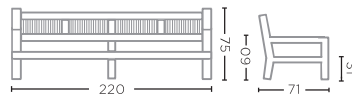
**2-SEATER MARIO**  
G632S-RO-NAT (P. 78-79)

TEAK NATURAL GREY / ROPE  
W145 X D71 X H75 CM



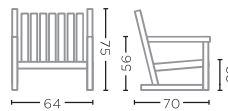
**3-SEATER MARIO**  
G632L-RO-NAT (P. 78-79)

TEAK NATURAL GREY / ROPE  
W220 X D71 X H75 CM



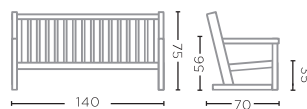
**EASY CHAIR ALAN**  
G058E-NAT (P. 111)

TEAK NATURAL GREY  
W64 X D70 X H75 CM



**BENCH ALAN**  
G058-BENCH-NAT (P. 110)

TEAK NATURAL GREY  
W140 X D70 X H75 CM







**CUSHION SET 1-SEATER MARIO**

G631-KBASIC / KLIMO /  
KNELOUT / KNELOUTLUX / KTEXTOUT\* (P. 78-79, 80)

W66 X D68 X H15 CM  
W67 X D13 X H40 CM



**CUSHION SET 2-SEATER MARIO**

G632S-KBASIC / KLIMO /  
KNELOUT / KNELOUTLUX / KTEXTOUT\* (P. 78-79)

W136 X D68 X H15 CM  
W137 X D13 X H40 CM



**CUSHION SET 3-SEATER MARIO**

G632L-KBASIC / KLIMO /  
KNELOUT / KNELOUTLUX / KTEXTOUT\* (P. 78-79)

W211 X D68 X H15 CM  
W212 X D13 X H40 CM



**CUSHION EASY CHAIR ALAN**

G058E-KBASIC / KLIMO /  
KNELOUT / KNELOUTLUX / KTEXTOUT\*  
W64 X D50 X H7 CM



**CUSHION BENCH ALAN**

G058-BENCH-KBASIC / KLIMO /  
KNELOUT / KNELOUTLUX / KTEXTOUT\*  
W140 X D55 X H7 CM

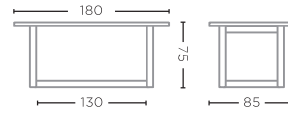


TABLES AND COFFEE TABLES - TECHNICAL SPECIFICATIONS



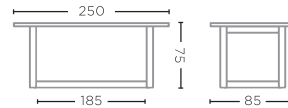
**RECTANGULAR TABLE DENNIS SMALL**  
G343S-RECT-NAT

TEAK NATURAL GREY  
L180 X W85 X H75 CM



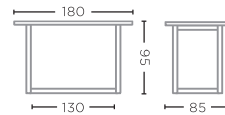
**RECTANGULAR TABLE DENNIS LARGE**  
G343L-RECT-NAT (P. 35)

TEAK NATURAL GREY  
L250 X W85 X H75 CM



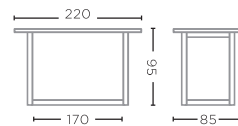
**RECTANGULAR BAR TABLE DENNIS SMALL**  
G343S-BAR-NAT (P. 42-43, 44-45)

TEAK NATURAL GREY  
L180 X W85 X H95 CM



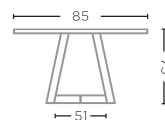
**RECTANGULAR BAR TABLE DENNIS LARGE**  
G343L-BAR-NAT

TEAK NATURAL GREY  
L220 X W85 X H95 CM



**BISTRO TABLE DENNIS**  
G343-BIS-NAT (P. 32-33)

TEAK NATURAL GREY  
L85 X W85 X H75 CM

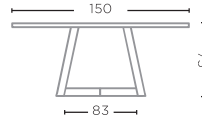






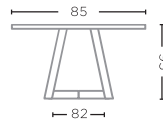
**SQUARE TABLE DENNIS**  
G343-NAT (P. 56-57)

TEAK NATURAL GREY  
L150 X W150 X H75 CM



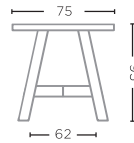
**BISTRO BAR TABLE DENNIS**  
G343-BAR-BIS-NAT (P. 66)

TEAK NATURAL GREY  
L85 X W85 X H95 CM



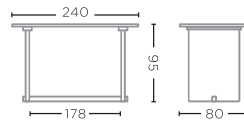
**ROUND BAR TABLE ALEX**  
G670-NAT (P. 55)

TEAK NATURAL GREY  
Ø75 X H95 CM



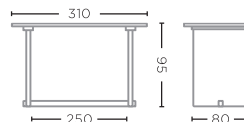
**BAR TABLE ALEXI SMALL**  
G255S-BAR-NAT (P. 60-61)

TEAK NATURAL GREY  
L240 X W80 X H95 CM



**BAR TABLE ALEXI LARGE**  
G255L-BAR-NAT

TEAK NATURAL GREY  
L310 X W80 X H95 CM



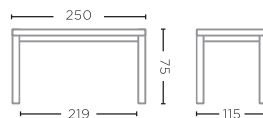


TABLES AND COFFEE TABLES - TECHNICAL SPECIFICATIONS



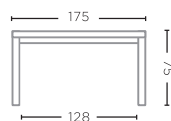
**TABLE MIGUEL**  
G667-NAT (P. 68-69)

TEAK NATURAL GREY  
L250 X W115 X H75 CM



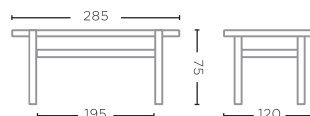
**SQUARE TABLE MIGUEL**  
G668-NAT (P. 40)

TEAK NATURAL GREY  
L175 X W175 X H75 CM



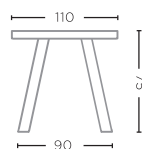
**TABLE ABE**  
G585-NAT (P. 28-29, 30-31)

TEAK NATURAL GREY  
L285 X W120 X H75 CM



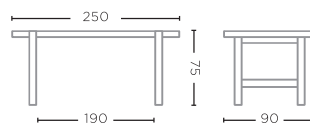
**ROUND TABLE CAROL**  
G601-NAT (P. 46-47)

TEAK NATURAL GREY  
Ø110 X H75 CM



**TABLE JACOB SMALL**  
G050S-NAT (P. 70-71)

TEAK NATURAL GREY  
L250 X W90 X H75 CM

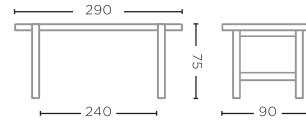






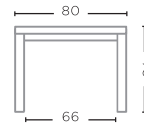
**TABLE JACOB LARGE**  
G050L-NAT

TEAK NATURAL GREY  
L290 X W90 X H75 CM



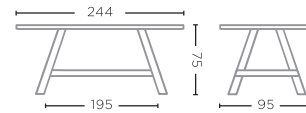
**BISTRO TABLE JACOB**  
G050-BIS-NAT (P. 73)

TEAK NATURAL GREY  
L80 X W80 X H75 CM



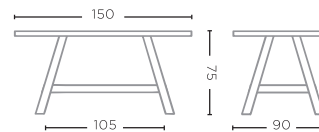
**DINING TABLE MIEKE**  
G718-NAT

TEAK NATURAL GREY  
L244 X W95 X H75 CM



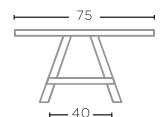
**RECTANGULAR BAR TABLE MIEKE**  
G719-BAR-NAT (P. 3)

TEAK NATURAL GREY  
L150 X W90 X H75 CM



**BISTRO TABLE MIEKE**  
G717-BIS-NAT (P. 48-49, 220)

TEAK NATURAL GREY  
L75 X W75 X H95 CM



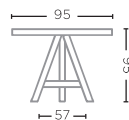


TABLES AND COFFEE TABLES - TECHNICAL SPECIFICATIONS



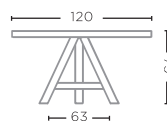
**ROUND BAR TABLE ANTON**  
G193-BAR-NAT (P. 58-59)

TEAK NATURAL GREY  
Ø95 X H95 CM



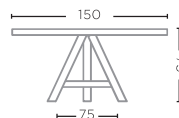
**ROUND TABLE ANTON SMALL**  
G193S-NAT

TEAK NATURAL GREY  
Ø120 X H75 CM



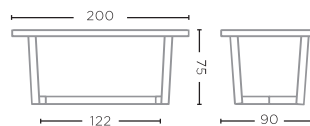
**ROUND TABLE ANTON LARGE**  
G193L-NAT (P. 62-63)

TEAK NATURAL GREY  
Ø150 X H75 CM



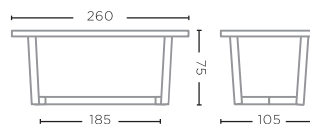
**OVAL TABLE DAN SMALL**  
G026S-NAT-OUT (P. 72)

TEAK NATURAL GREY  
L200 X W90 X H75 CM



**OVAL TABLE DAN LARGE**  
G026L-NAT-OUT

TEAK NATURAL GREY  
L260 X W105 X H75 CM

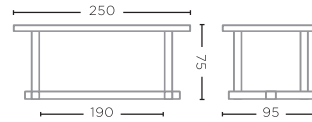






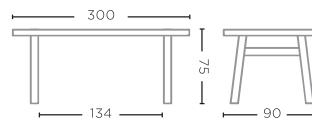
**TABLE JOSSE**  
G055-NAT (P. 74-75)

TEAK NATURAL GREY  
L250 X W95 X H75 CM



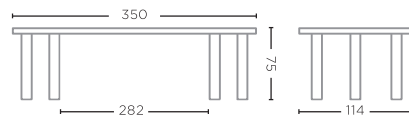
**TABLE MIA LARGE**  
G347L-NAT (P. 26-27)

TEAK NATURAL GREY  
L300 X W90 X H75 CM



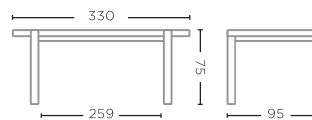
**DINING TABLE CARLO**  
G669-NAT (P. 20-21, 22-23)

TEAK NATURAL GREY  
L350 X D114 X H75 CM



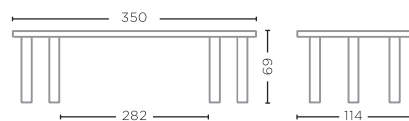
**TABLE MAXIMUS**  
G500-NAT (P. 33, 52-53)

TEAK NATURAL GREY  
L330 X W95 X H75 CM



**LOW TABLE CARLO**  
G556-NAT (P. 16-17)

TEAK NATURAL GREY  
L350 X W114 X H69 CM



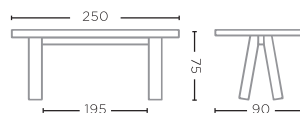


TABLES AND COFFEE TABLES - TECHNICAL SPECIFICATIONS



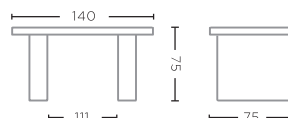
**TABLE ZIGGY**  
G350-NAT (P. 24-25)

TEAK NATURAL GREY  
L250 X W90 X H75 CM



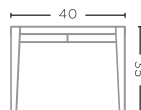
**TABLE PEBBLE**  
G664-NAT (P. 54)

TEAK NATURAL GREY  
L140 X W75 X H75 CM



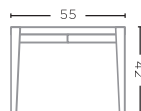
**SQUARE COFFEE TABLE FLOOR SMALL**  
G561S-NAT (P. 18, 97, 118)

TEAK NATURAL GREY  
L40 X W40 X H35 CM



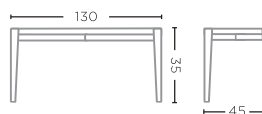
**SQUARE COFFEE TABLE FLOOR LARGE**  
G561L-NAT (P. 97)

TEAK NATURAL GREY  
L55 X W55 X H42 CM



**RECTANGULAR COFFEE TABLE FLOOR SMALL**  
G561S-RECT-NAT (P. 96-97)

TEAK NATURAL GREY  
L130 X W45 X H35 CM

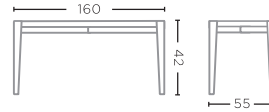






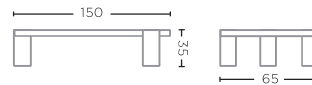
**RECTANGULAR COFFEE TABLE FLOOR LARGE**  
G561L-RECT-NAT (P. 96-97)

TEAK NATURAL GREY  
L160 X W55 X H42 CM



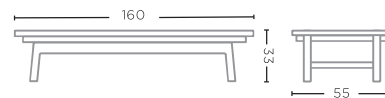
**COFFEE TABLE DOVETAIL**  
G042-NAT (P. 94)

TEAK NATURAL GREY  
L150 X W65 X H35 CM



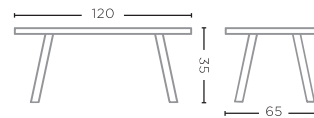
**COFFEE TABLE COPENHAGUE**  
G048-NAT (P. 92)

TEAK NATURAL GREY  
L160 X W55 X H33 CM



**COFFEE TABLE CAROL**  
G550-NAT (P. 112-113, 158-159)

TEAK NATURAL GREY  
L120 X W65 X H35 CM



**COFFEE TABLE ANTON SET OF 3**  
G326-SET-NAT (P. 90-91, 120)

TEAK NATURAL GREY  
Ø50 X H32 CM / Ø65 X H37 CM / Ø80 X H42 CM



TABLES AND COFFEE TABLES - TECHNICAL SPECIFICATIONS



**COFFEE TABLE FLOOR SET OF 3**  
G503-SET-NAT (P. 104-105, 106-107, 149)

TEAK NATURAL GREY  
Ø50 X H33 CM / Ø65 X H37 CM / Ø80 X H42 CM



**COFFEE TABLE NATURAL SHAPE**  
G165-NAT (P. 78-79, 164)

TEAK ROOT NATURAL GREY  
L85-100 X W35-45 X H40 CM



**COFFEE TABLE PUZZLE SMALL**  
G066S-NAT (P. 165)

TEAK NATURAL GREY  
L40 X W40 X H38 CM

**COFFEE TABLE PUZZLE LARGE**  
G066L-NAT (P. 165)

TEAK NATURAL GREY  
L55 X W55 X H35 CM



**STOOL REX**  
G543-NAT (P. 111, 158-159)

TEAK ROOT NATURAL GREY  
Ø35 X H45 CM



**COFFEE TABLE ROOT CYLINDER**  
G064-NAT (P. 130)

TEAK ROOT NATURAL GREY  
Ø30 X H40 CM



**SIDE TABLE PEBBLE MEDIUM**  
G663M-NAT

TEAK NATURAL GREY  
L52 X W38 X H40 CM



**SIDE TABLE PEBBLE LARGE**  
G663L-NAT (P. 132-133, 134-135, 138-139)

TEAK NATURAL GREY  
L65 X W51 X H35 CM



**TABLES AND COFFEE TABLES - TECHNICAL SPECIFICATIONS**



**SIDE TABLE DOBLO SMALL**  
G714S-NAT (P. 108, 123, 152-153)

TEAK ROOT NATURAL GREY  
L33 X W33 X H31 CM

**SIDE TABLE DOBLO MEDIUM**  
G714M-NAT(P. 108, 152-153)

TEAK ROOT NATURAL GREY  
L33 X W33 X H37 CM

**SIDE TABLE DOBLO LARGE**  
G714L-NAT (P. 108, 152-153)

TEAK ROOT NATURAL GREY  
L33 X W33 X H44 CM



**COFFEE TABLE CUMI SMALL**  
G063S-NAT (P. 54, 150-151)

TEAK ROOT NATURAL GREY  
L30 X W30 X H45 CM

**COFFEE TABLE CUMI MEDIUM**  
G063M-NAT (P. 54, 150-151)

TEAK ROOT NATURAL GREY  
L40 X W30 X H70 CM

**COFFEE TABLE CUMI LARGE**  
G063L-NAT (P. 54, 150-151)

TEAK ROOT NATURAL GREY  
L50 X W60 X H100 CM



**LOW TABLE SAMBA SMALL**  
G477S-NAT (P. 100-101, 126-127)

TEAK ROOT NATURAL GREY  
Ø50 X H28 CM

**LOW TABLE SAMBA LARGE**  
G477L-NAT (P. 100-101, 126-127)

TEAK ROOT NATURAL GREY  
Ø50 X H35 CM



**COFFEE TABLE ROOT BALL**  
G062-NAT (P. 82-83, 84-85, 116-117)

TEAK ROOT NATURAL GREY  
Ø60 X H40 CM

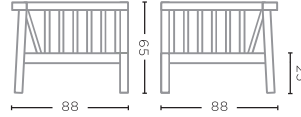


LOUNGES & SOFAS - TECHNICAL SPECIFICATIONS



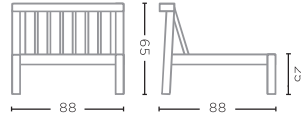
**CORNER COPENHAGUE**  
G044-NAT (P. 92-93, 164)

TEAK NATURAL GREY  
W88 X D88 X H65 CM



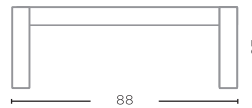
**CENTER COPENHAGUE**  
G045-NAT (P. 92-93, 164)

TEAK NATURAL GREY  
W88 X D88 X H65 CM



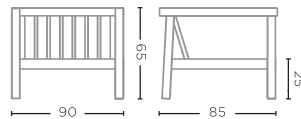
**OTTOMAN COPENHAGUE**  
G046-NAT (P. 92-93)

TEAK NATURAL GREY  
W88 X D88 X H25 CM



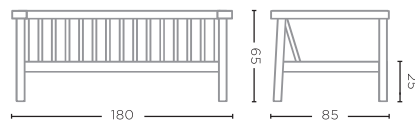
**1-SEATER COPENHAGUE**  
G040-NAT (P. 92-93)

TEAK NATURAL GREY  
W90 X D85 X H65 CM



**2-SEATER COPENHAGUE**  
G041-NAT (P. 90-91)

TEAK NATURAL GREY  
W180 X D85 X H65 CM







**CUSHION SET CORNER COPENHAGUE**

G044-KBASIC / KLIMO / KNELOUT /  
KNELOUTLUX / KTEXTOUT\* (P. 92-93, 164)

W74 X D74 X H15 CM  
W80 X D20 X H34 CM



**CUSHION SET CENTER COPENHAGUE**

G045-KBASIC / KLIMO / KNELOUT /  
KNELOUTLUX / KTEXTOUT\* (P. 92-93, 164)

W88 X D74 X H15 CM  
W88 X D20 X H34 CM



**CUSHION OTTOMAN COPENHAGUE**

G046-KBASIC / KLIMO / KNELOUT /  
KNELOUTLUX / KTEXTOUT\* (P. 92-93)

W88 X D88 X H15 CM



**CUSHION SET 1-SEATER COPENHAGUE**

G040-KBASIC / KLIMO / KNELOUT /  
KNELOUTLUX / KTEXTOUT\* (P. 92-93)

W74 X D68 X H15 CM  
W74 X D20 X H34 CM



**CUSHION 2-SEATER COPENHAGUE**

G041-KBASIC / KLIMO / KNELOUT /  
KNELOUTLUX / KTEXTOUT\* (P. 90-91)

W164 X D68 X H15 CM  
W164 X D20 X H34 CM

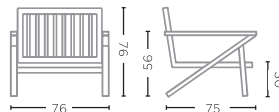


LOUNGES & SOFAS - TECHNICAL SPECIFICATIONS



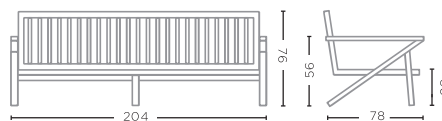
**ALABAMA 1-SEATER**  
G557-NAT (P. 96-97, 99)

TEAK NATURAL GREY  
W76 X D75 X H76 CM



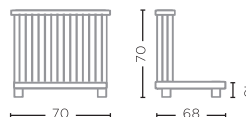
**ALABAMA 2,5-SEATER**  
G558-NAT (P. 96-97, 98)

TEAK NATURAL GREY  
W204 X D78 X H76 CM



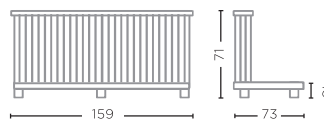
**LOUNGE CAROL 1-SEATER**  
G406-NAT (P. 112-113)

TEAK NATURAL GREY  
W70 X D68 X H70 CM



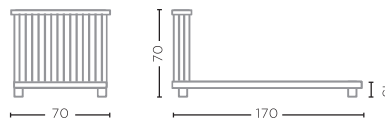
**LOUNGE CAROL 2-SEATER**  
G549-NAT (P. 112-113, 158-159)

TEAK NATURAL GREY  
W159 X D73 X H71 CM



**CHAISE LONGUE CAROL**  
G551-NAT (P. 112-113, 158-159)

TEAK NATURAL GREY  
W70 X D170 X H70 CM







**CUSHION SET ALABAMA 1-SEATER**

G557-KBASIC / KLIMO / KNELOUT /  
KNELOUTLUX / KTEXTOUT\* (P. 96-97, 99)

W60 X D65,5 X H12 CM  
W60 X D16 X H38 CM



**CUSHION SET ALABAMA 2,5-SEATER**

G558-KBASIC / KLIMO / KNELOUT /  
KNELOUTLUX / KTEXTOUT\* (P. 96-97)

W190 X D65,5 X H12 CM  
W190 X D16 X H38 CM



**CUSHION SEAT LOUNGE CAROL 1-SEATER**

G406-KBASIC / KLIMO / KNELOUT /  
KNELOUTLUX / KTEXTOUT\* (P. 112-113)

W70 X D65 X H30 CM

Deco cushions not included.



**CUSHION LOUNGE CAROL 2-SEATER**

G549-KBASIC / KLIMO / KNELOUT /  
KNELOUTLUX / KTEXTOUT\* (P. 112-113, 158-159)

W159 X D73 X H30 CM

Deco cushions not included.



**CUSHION CHAISE LONGUE CAROL**

G551-KBASIC / KLIMO / KNELOUT /  
KNELOUTLUX / KTEXTOUT\* (P. 112-113, 158-159)

W72 X D164 X H30 CM

Deco cushions not included.

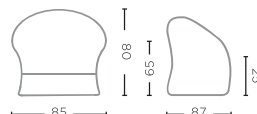


LOUNGES & SOFAS - TECHNICAL SPECIFICATIONS



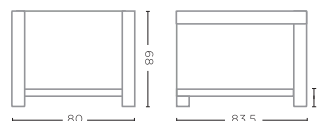
**EASY CHAIR FELINE**  
G673-CLR-PE (P. 82-83, 84-85)

CL PE WICKER NATURAL  
W85 X D87 X H80 CM



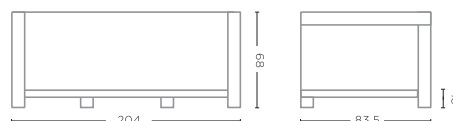
**1-SEATER MIEKE**  
G709-PE-NAT (P. 77, 104-105, 106-107, 219)

TEAK NATURAL GREY & PE WICKER SAND  
W80 X D83,5 X H68 CM



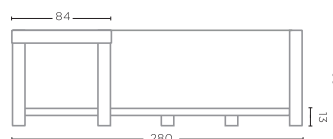
**2,5-SEATER MIEKE**  
G710-PE-NAT (P. 108-109)

TEAK NATURAL GREY & PE WICKER SAND  
W204 X D83,5 X H68 CM



**SOFA L SHAPE MIEKE**  
G711-PE-NAT (P. 104-105, 106-107, 149)

TEAK NATURAL GREY & PE WICKER SAND  
W280 X D84 X H69 CM







**CUSHION SET EASY CHAIR FELINE**

G673-KBASIC / KLIMO / KNELOUT /  
KNELOUTLUX / KTEXTOUT\* (P. 82-83, 84-85)

W61,5 X D65 X H13 CM  
W53,5 X D13 X H40 CM



**CUSHION SET 1-SEATER MIEKE**

G709-KBASIC / KLIMO / KNELOUT /  
KNELOUTLUX / KTEXTOUT\* (P. 104-105, 106-107)

W76 X D77 X H26 CM  
W70 X D19 X H40 CM



**CUSHION SET 2,5-SEATER MIEKE**

G710-KBASIC / KLIMO / KNELOUT /  
KNELOUTLUX / KTEXTOUT\* (P. 108-109)

W202 X D76 X H26 CM  
W197 X D19 X H40 CM



**CUSHION SET SOFA L SHAPE MIEKE**

G711-KBASIC / KLIMO / KNELOUT /  
KNELOUTLUX / KTEXTOUT\* (P. 104-105, 106-107, 149)

W195 X D76 X H26 CM  
W196 X D19 X H40 CM

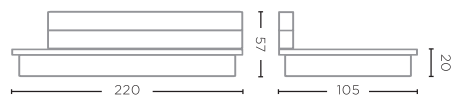


LOUNGES & SOFAS - TECHNICAL SPECIFICATIONS



**LOUNGE MAGNUS**  
G428-NAT (P. 114-115)

TEAK NATURAL GREY  
W220 X D105 X H57 CM



**CUSHION SET LOUNGE MAGNUS SMALL**  
G428S-KBASIC / KLIMO / KNELOUT /  
KNELOUTLUX / KTEXTOUT\*

W180 X D95 X H17 CM  
W175 X D18 X H32 CM



**CUSHION SET LOUNGE MAGNUS LARGE**  
G428L-KBASIC / KLIMO / KNELOUT /  
KNELOUTLUX / KTEXTOUT\* (P. 114-115)

W220 X D95 X H17 CM  
W175 X D18 X H32 CM



**OTTOMAN MAGNUS**  
G429-NAT (P. 114-115)

TEAK NATURAL GREY  
W105 X D105 X H20 CM



**CUSHION OTTOMAN MAGNUS**  
G429-KBASIC / KLIMO / KNELOUT /  
KNELOUTLUX / KTEXTOUT\* (P. 114)

W105 X D105 X H17 CM





**EASY CHAIR ORSO**  
G547E-NAT (P. 122-123, 174)

TEAK NATURAL GREY  
W67 X D85 X H92 CM



**CUSHION EASY CHAIR ORSO**  
G547E-KBASIC / KLIMO / KNELOUT /  
KNELOUTLUX / KTEXTOUT\*

W55 X D52 X H5 CM



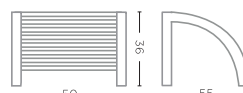
**CUSHION HEADREST EASY CHAIR ORSO**  
G547E-HEAD-KBASIC / KLIMO / KNELOUT /  
KNELOUTLUX / KTEXTOUT\*

W50 X D10 X H14 CM



**FOOTREST ORSO**  
G547E-FOOT-NAT (P. 122-123)

TEAK NATURAL GREY  
W50 X D55 X H36 CM



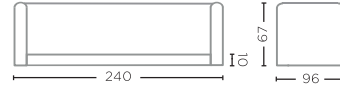


LOUNGES & SOFAS - TECHNICAL SPECIFICATIONS



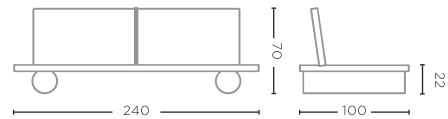
**SOFA DORAN**  
G421-CLR-PE (P. 116-117)

CL PE WICKER NATURAL  
W240 X D96 X H67 CM



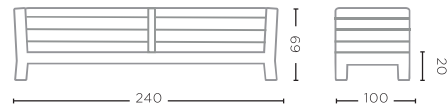
**SOFA EDGE**  
G508-PE-AW (P. 100-101, 102-103)

TEAK NATURAL GREY /  
PE ANTIQUE WEED  
W240 X D100 X H70 CM



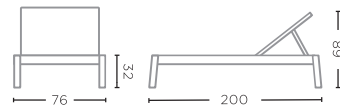
**SOFA MIA 3-SEATER**  
G334-NAT (P. 94-95, 165)

TEAK NATURAL GREY  
W240 X D100 X H69 CM



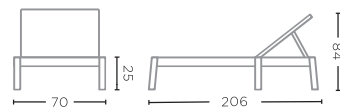
**SUNBED COPENHAGUE**  
G047-NAT (P. 128-129)

TEAK NATURAL GREY  
L200 X W76 X H32 CM



**SUNNY BED COPENHAGUE**  
G244-NAT (P. 126-127)

TEAK NATURAL GREY  
L206 X W70 X H25 CM







**CUSHION SET SOFA DORAN**  
G421-KBASIC / KLIMO / KNELOUT /  
KNELOUTLUX / KTEXTOUT\* (P. 116-117)

W200 X D78 X H32 CM  
W200 X D22 X H34 CM



**CUSHION SET SOFA EDGE**  
G508-KBASIC / KLIMO / KNELOUT /  
KNELOUTLUX / KTEXTOUT\* (P. 100-101, 102-103)

W240 X D82 X H20 CM  
W210 X D32 X H20 CM



**CUSHION SET SOFA MIA 3-SEATER**  
G334-KBASIC / KLIMO / KNELOUT /  
KNELOUTLUX / KTEXTOUT\* (P. 94-95, 165)

W210 X D86 X H25 CM  
W210 X D21 X H32 CM



**CUSHION SUNBED COPENHAGUE**  
G047-KBASIC / KLIMO / KNELOUT /  
KNELOUTLUX / KTEXTOUT\* (P. 128-129)

L198 X W76 X H13 CM



**CUSHION SUNNY BED COPENHAGUE**  
G244-KBASIC / KLIMO / KNELOUT /  
KNELOUTLUX / KTEXTOUT\* (P. 126-127)

L202 X W70 X H12 CM

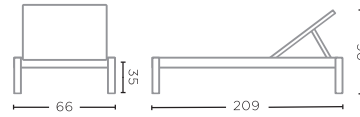


SUNLOUNGERS & ACCESSORIES - TECHNICAL SPECIFICATIONS



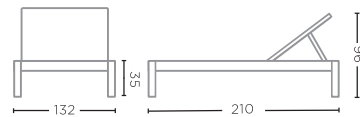
**SUNLOUNGER LISA (INCL. WHEELS)**  
G404-PE-AW (P. 136-137)

TEAK NATURAL GREY / PE ANTIQUE WEED  
L209 X W66 X H35 CM



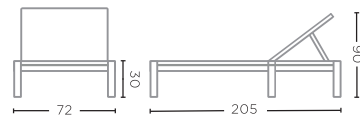
**DOUBLE SUNLOUNGER LISA (INCL. WHEELS)**  
G404D-PE-AW (P. 124-125)

TEAK NATURAL GREY / PE ANTIQUE WEED  
L210 X W132 X H35 CM



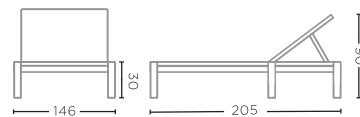
**SUNLOUNGER MIEKE (INCL. WHEELS)**  
G656-PE-NAT (P. 130-131)

TEAK NATURAL GREY / PE WICKER SAND  
L205 X W72 X H30 CM



**DOUBLE SUNLOUNGER MIEKE (INCL. WHEELS)**  
G656D-PE-NAT (P. 132-133, 134-135, 138-139)

TEAK NATURAL GREY / PE WICKER SAND  
L205 X W146 X H30 CM



**CHAISE LONGUE FIONA (INCL. WHEELS)**  
G509-PE-AW (P. 120-121)

TEAK NATURAL GREY / PE ANTIQUE WEED  
L170 X W61 X H75 CM







**CUSHION SUNLOUNGER LISA**  
G404-KBASIC / KLIMO / KNELOUT /  
KNELOUTLUX / KTEXTOUT\*

L204 X W57 X H5 CM



**CUSHION SUNLOUNGER LISA**  
G404-KBASIC / KLIMO / KNELOUT /  
KNELOUTLUX / KTEXTOUT\* (P. 124-125)

L204 X W57 X H5 CM

Two cushions Sunlounger Lisa required.



**CUSHION SUNLOUNGER MIEKE**  
G656-KBASIC / KLIMO / KNELOUT /  
KNELOUTLUX / KTEXTOUT\* (P. 130-131)

L202 X W73 X H9,5 CM



**CUSHION DOUBLE SUNLOUNGER MIEKE**  
G656D-KBASIC / KLIMO / KNELOUT /  
KNELOUTLUX / KTEXTOUT\* (P. 132-133, 134-135, 138-139)

L202 X W146 X H9,5 CM



**CUSHION CHAISE LONGUE FIONA**  
G509-KBASIC / KLIMO / KNELOUT /  
KNELOUTLUX / KTEXTOUT\* (P. 120-121)

L195 X W60 X H5 CM

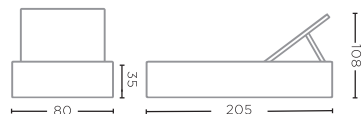


SUNLOUNGERS & ACCESSORIES - TECHNICAL SPECIFICATIONS



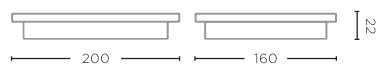
**SUNLOUNGER JONES (INCL. WHEELS)**  
G422-CLR-PE (P. 142-143)

CL PE WICKER NATURAL  
L205 X W80 X H35 CM



**DAYBED YASMIN**  
G491-CLR-PE (P. 140-141)

CL PE WICKER NATURAL  
L200 X W160 X H22 CM



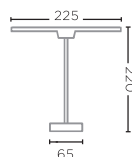
**TOWEL RACK FINN**  
G633-NAT (P. 146-147)

TEAK NATURAL GREY  
L85 X W35 X H115 CM



**PARASOL YASMIN**  
G492-CLR-PE (P. 142)

CL PE WICKER NATURAL  
L225 X W225 X H220 CM







**CUSHION SUNLOUNGER JONES**  
G422-KBASIC / KLIMO / KNELOUT /  
KNELOUTLUX / KTEXTOUT\* (P. 142-143)

L195 X W66 X H9 CM



**CUSHION SET DAYBED YASMIN**  
G491-KLIMOQD / KNELOUTLUXQD /  
KNELOUTQD / KTEXTOUTQD\* (140-141)

L200 X W160 X H20 CM



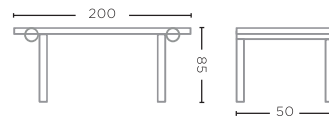
**RACK ROLF**  
G666-NAT (P. 66-67)

TEAK NATURAL GREY  
W120 X D40 X H150 CM



**CONSOLE ROLF**  
G665-NAT (P. 104, 148-149)

TEAK NATURAL GREY  
W200 X D50 X H85 CM



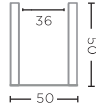


PLANTERS - TECHNICAL SPECIFICATIONS



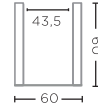
**SQUARE PLANTER FERDY 50**  
G268-NAT (P. 154)

TEAK NATURAL GREY  
W50 X D50 X H50 CM



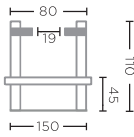
**SQUARE PLANTER FERDY 60**  
G267-NAT

TEAK NATURAL GREY  
W60 X D60 X H60 CM



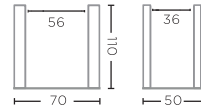
**BENCH PLANTER FERDY**  
G427-NAT (P. 155)

TEAK NATURAL GREY  
W150 X D150 X H110 CM



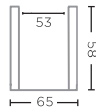
**RECTANGULAR PLANTER FERDY**  
G266-NAT

TEAK NATURAL GREY  
W70 X D50 X H110 CM



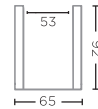
**HEXAGON PLANTER LOGAN LOW SMALL**  
G659-NAT (P. 163)

TEAK NATURAL GREY  
Ø65 X H58 CM



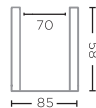
**HEXAGON PLANTER LOGAN HIGH**  
G661-NAT (P. 163)

TEAK NATURAL GREY  
Ø65 X H92 CM



**HEXAGON PLANTER LOGAN LOW LARGE**  
G660-NAT (P. 163)

TEAK NATURAL GREY  
Ø85 X H58 CM



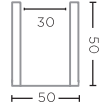




**PLANTER BASKET  
NELSON SMALL  
G677S-CL**

CL RATTAN DARK  
Ø50 X H50 CM

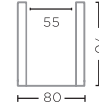
Unpeeled rattan makes the basket darker and stronger.



**PLANTER BASKET  
NELSON LARGE  
G677L-CL (P. 162)**

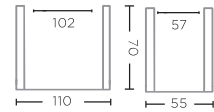
CL RATTAN DARK  
Ø80 X H70 CM

Unpeeled rattan makes the basket darker and stronger.



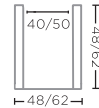
**RECTANGULAR PLANTER  
BASKET NICOLAS  
G417-CLR**

CL RATTAN  
W110 X D55 X H70 CM



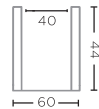
**SQUARE PLANTER BASKET  
NICOLAS SET OF 2  
G311-S2-CLR (P. 157)**

CL RATTAN  
W62 X D62 X H62 CM  
W48 X D48 X H48 CM



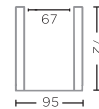
**PLANTER BASKET  
HENDRIK SMALL  
G526S-CLR (P. 74, 226)**

CL RATTAN  
Ø60 X H44 CM



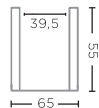
**PLANTER BASKET  
HENDRIK LARGE  
G526L-CLR (P. 161, 226)**

CL RATTAN  
Ø95 X H72 CM



**PLANTER BASKET ERIC  
G418-CLR (P. 104, 106-107, 146, 149)**

CL RATTAN  
Ø65 X H55 CM

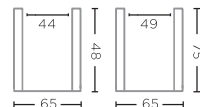


**PLANTER BASKET NELL SMALL  
G525S-CLR (P. 160, 158-159)**

CL RATTAN  
Ø65 X H48 CM

**PLANTER BASKET NELL LARGE  
G525L-CLR**

CL RATTAN  
Ø65 X H75 CM





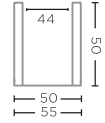
PLANTERS - TECHNICAL SPECIFICATIONS



**PLANTER BASKET JULIA SMALL**

G309S-CLR (P. 156)

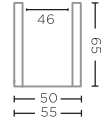
CL RATTAN  
Ø50-55 X H50 CM



**PLANTER BASKET JULIA MEDIUM**

G309M-CLR (P. 30, 156)

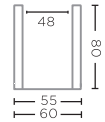
CL RATTAN  
Ø50-55 X H65 CM



**PLANTER BASKET JULIA LARGE**

G309L-CLR (P. 156)

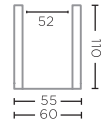
CL RATTAN  
Ø55-60 X H80 CM



**PLANTER BASKET JULIA EXTRA LARGE**

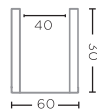
G309XL-CLR

CL RATTAN  
Ø55-60 X H110 CM



**HANGING BASKET LUCA**  
G527-CLR (P. 145, 158-159)

CL RATTAN  
Ø60 X H30 CM



**HANGING LAMP DEREK  
OUTDOOR**  
G528-CLR (P. 104, 145, 158-159)

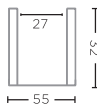
CL RATTAN  
Ø63 X H54 CM



**HANGING BASKET DISC**  
G716-CL (P. 104, 106-107, 148)

CL RATTAN DARK  
Ø55 X H32 CM

Unpeeled rattan makes the basket darker and stronger.



**HANGING LAMP DISC SMALL**  
G715S-CL (P. 104, 106-107, 148)

CL RATTAN DARK  
Ø47 X H50 CM

**HANGING LAMP DISC LARGE**  
G715L-CL (P. 104, 106-107, 148)

CL RATTAN DARK  
Ø52 X H60 CM

Unpeeled rattan makes the basket darker and stronger.





**SQUARE SOFT POUF SMALL WITHOUT PIPING**

G152S-NP-KLIMOQD / KNELOUTLUXQD /  
KNELOUTQD / KTEXTOUTQD\* (P. 164)

L55 X W55 X H30 CM

**SQUARE SOFT POUF LARGE WITHOUT PIPING**

G152L-NP-KLIMOQD / KNELOUTLUXQD /  
KNELOUTQD / KTEXTOUTQD\*

L60 X W60 X H40 CM



**ROUND SOFT POUF SMALL**

G153S-KLIMOQD / KNELOUTLUXQD /  
KNELOUTQD / KTEXTOUTQD\*

Ø55 X H30 CM

**ROUND SOFT POUF LARGE**

G153L-KLIMOQD / KNELOUTLUXQD /  
KNELOUTQD / KTEXTOUTQD\*

Ø60 X H40 CM



**SQUARE HARD POUF WITH FLUFFY PIPING**

G559-KLIMOQD / KNELOUTLUXQD /  
KNELOUTQD / KTEXTOUTQD\* (P. 128-129)

L42 X W42 X H35 CM

**SQUARE SOFT POUF WITH FLUFFY PIPING**

G560-KLIMOQD / KNELOUTLUXQD /  
KNELOUTQD / KTEXTOUTQD\* (128-129)

L55 X W55 X H42 CM



**SQUARE POUF / SIDETABLE**

G387-KLIMOQD / KNELOUTLUXQD /  
KNELOUTQD / KTEXTOUTQD\* (P. 165)

L42 X W42 X H35 CM



**SQUARE POUF / SIDETABLE + STONE TOP**

G387-KLIMOQD-TOP / KNELOUTLUXQD-TOP /  
KNELOUTQD-TOP / KTEXTOUTQD-TOP\* (P. 165)

L42 X W42 X H38 CM



DECO CUSHIONS - TECHNICAL SPECIFICATIONS



**DECO CUSHION 40X40 CM**

G155-KBASIC / KLIMO /  
KNELOUT / KNELOUTLUX /  
KTEXTOUT\*

L40 X W40



**DECO CUSHION 50X50 CM**

G156-KBASIC / KLIMO /  
KNELOUT / KNELOUTLUX /  
KTEXTOUT\*

L50 X W50 CM



**DECO CUSHION 45X45 CM**

G1561-KBASIC / KLIMO /  
KNELOUT / KNELOUTLUX /  
KTEXTOUT\*

L45 X W45 CM



**DECO CUSHION 55X55 CM**

G158-KBASIC / KLIMO /  
KNELOUT / KNELOUTLUX /  
KTEXTOUT\*

L55 X W55 CM



**DECO CUSHION 60X60 CM**

G154-KBASIC / KLIMO /  
KNELOUT / KNELOUTLUX /  
KTEXTOUT\*

L60 X W60 CM



**DECO CUSHION 60X40 CM**

G157-KBASIC / KLIMO /  
KNELOUT / KNELOUTLUX /  
KTEXTOUT\*

L60 X W40 CM



**DECO CUSHION 60X25 CM**

G1572-KBASIC / KLIMO /  
KNELOUT / KNELOUTLUX /  
KTEXTOUT\*

L60 X W25 CM



**DECO CUSHION 80X60 CM**

G1581-KBASIC / KLIMO /  
KNELOUT / KNELOUTLUX /  
KTEXTOUT\*

L80 X W60 CM



**DECO CUSHION 80X35 CM**

G1571-KBASIC / KLIMO /  
KNELOUT / KNELOUTLUX /  
KTEXTOUT / TYRO\*

L80 X W35 CM



**CUSHION HEADY**

G672-KBASIC / KLIMO /  
KNELOUT / KNELOUTLUX /  
KTEXTOUT\* (P. 130-135, 139, 143)

W41 X D54 X H10 CM

DISCOVER OUR DECO CUSHIONS ON PAGES 86, 92-94, 104-109, 112-113, 116-119, 124-125, 128-129, 149, 164-167.





**RECTANGULAR RUG OTTO OUTDOOR**

G738-BR (P. 42-43, 44-45, 152-153)

HAND-WOVEN POLYPROPYLENE OUTDOOR  
BROWN / ECO-FRIENDLY PET FIBRES  
L350 X W250 CM



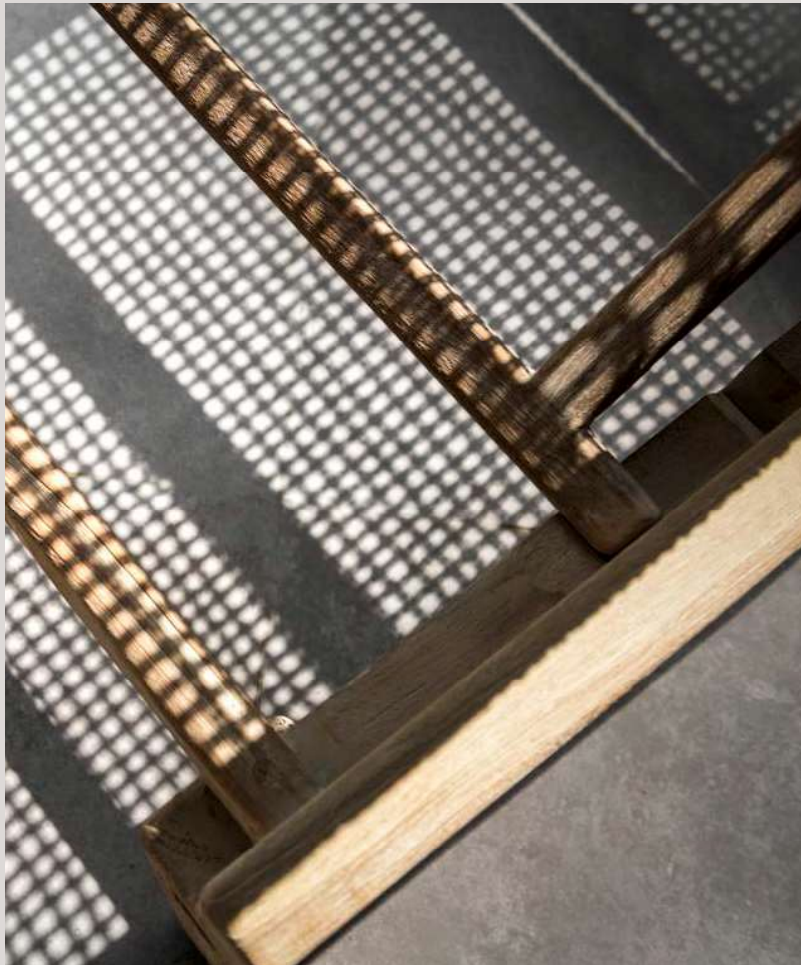
**RECTANGULAR RUG OTTO OUTDOOR**

G738-BL

HAND-WOVEN POLYPROPYLENE OUTDOOR  
BLACK / ECO-FRIENDLY PET FIBRES  
L350 X W250 CM









## CARE & USE

We believe in the beauty of nature and the wonderful effect the passage of time has on our collection. Yet some regular maintenance of your furniture and decorative items is recommended.

Our Care & Use manuals offer you useful information on how to keep your GOMMAIRE products in optimal condition.

Should you have additional questions, please contact your local GOMMAIRE retailer or our Customer Service Department.



## OUTDOOR WOOD COLLECTION

The GOMMAIRE outdoor wood collection is made of qualitative teak wood and teak root structures. The wood has not been treated to prevent staining, colour changes or weathering. The following information will help you understand, maintain, and protect your furniture.

Solid teak wood is a natural material with its own characteristics and variations in structure and colour that can change over time, especially exposed to daylight. Furthermore, wood is quite sensitive to large differences in humidity and temperature. Therefore, we recommend keeping both conditions as stable as possible. It is always a possibility that cracks, fissures and wood bendings could appear. However, the natural changes that occur are not only desirable but also align perfectly with the core philosophy of GOMMAIRE. Moreover, we do offer some maintenance products to add extra protection and optimise the lifespan of our wooden items.

When moving the wooden furniture around, make sure to always lift and never slide it to prevent breakage. Furniture should always be placed on a flat surface. In situations where achieving a perfectly level surface is not feasible, our tables and side tables come equipped with adjustable furniture levellers.











## GENERAL MAINTENANCE

Start with using a damp cloth to remove dust and any white residue left by the packaging and transport.

The surface of the wood can be cleaned with water and natural soap at any given time. Always make sure to treat the entire surface, as local treatments will remain visible. The GOMMAIRE TEAK CLEANER can be applied on teak outdoor furniture to remove the dirt left by regular usage or air pollution. For surface stains that do not respond to the previously mentioned instructions, our G-SPOTSTOP can provide further assistance in reducing and minimising them.

Lastly, to help the longevity of your teak furniture and prevent certain stains, you can apply a protective layer of our GOMMAIRE TEAK PROTECTOR. Bear in mind that it is still highly recommended to remove any stains as quickly as possible to prevent them from soaking into the wood.

On the following pages, you will find more detailed information about the maintenance products and how to use them.





**G**  
GOMMAIRE  
organic living

**TEAK  
PROTECTOR**

Makes teak repellent to water and moisture.  
helps to prevent stains caused by food and drinks.

ECO SAFE    HEAVY DUTY PROTECT

**G**  
GOMMAIRE  
organic living

**TEAK  
CLEANER**

For the restoration of weathered, grey teak.  
Cleaner & Brightener in one.

ECO SAFE    HEAVY DUTY

WOCA  
DENMARK

**SPOTSTOP**

VETVLEKVERWIJDERAAR  
voor gelijde parket  
détachant de graisse • pour parquets  
facile à appliquer • für gelbes Parkett

**G**



## GENERAL STEPS BEFORE APPLYING ANY OF THE PRODUCTS

The products are to be used during dry weather and temperatures between 15°-30° Celsius. Avoid direct sunlight. Clean the surface with a damp cloth, then make sure it is completely dry before applying the product. The humidity of the wood should be under 12%. You can remove any raised wood fibres with a scrubbing pad.

Always be careful using the following products. When applied incorrectly, undesired discolourations and changes in the wood may appear. Place a protective layer in between your furniture piece and the floor to protect it from accidental leakage or spills, these might leave behind stains that cannot be removed. If you are unsure about a product, we advise you to test on a non-visible spot on your furniture piece.

### G-SPOTSTOP

For more stubborn stains we offer G-SPOTSTOP. As with any stain, it is important to remove them as soon as possible. Prompt removal of stains is crucial for optimal results. Delaying the removal until the following day may reduce its effectiveness. Even if your furniture piece is treated with the G-PROTECTOR.

#### How to use

Before usage, shake the spray bottle to ensure the proper mixture. Then spray the G-SPOTSTOP approx. 20 cm above the stain. Allow the product to sit for a few minutes. To remove the stain, gently brush it out using a brush or lightly dab it with a cloth. Please avoid rubbing with the cloth, as it causes the stain to absorb into the fibres of the wood.



## TEAK CLEANER

Use the G-CLEANER when your natural grey outdoor furniture needs a general cleaning, for example when the wood is weathered or slightly discoloured. Depending on the inherent base colour of the wood, this product will enhance those tones. That is why the wood may develop a pink, yellow or orange hue after cleaning. It is important to note that this gradual shift in colour is a normal occurrence that would naturally take place over time.

### How to use

Begin by gently rinsing the entire piece with a hose, followed by the removal of any residual water using a soft cloth. Spray the G-CLEANER on the entire surface, allowing it to settle for approximately 10 minutes. Employ a scouring pad, moving in the direction of the wood grain, to gently cleanse the piece. Subsequently, ensure a thorough rinsing to remove all remnants. Additionally, utilise a cloth to carefully eliminate excess water. Keep your furniture piece out of direct sunlight to dry. If the outcome does not meet your expectations once the piece has dried, feel free to repeat this treatment.



## TEAK PROTECTOR

G-PROTECTOR is a water-based teak protector that helps shield the surface against water-based stains and slows down the natural greening process. For those periods when your furniture piece remains unused, we highly recommend applying this product. However, it's important to note that G-PROTECTOR is not full coverage and does not prevent the natural ageing or greying process that occurs over time. To maximise protection, we recommend first using our TEAK CLEANER.

### How to use

For new furniture, we recommend following these steps. Firstly, gently wipe the entire surface with a lightly damp cloth and allow it to dry for one week before applying the product. This waiting period ensures the best results.

When dealing with older furniture, we suggest using our teak cleaner to cleanse the entire piece beforehand. If the cleaned teak appears rough, gently refine the surface using a scrubbing pad. The waiting period is not necessary after this.

Before applying the teak protector, make sure the entire surface is completely dry and free from dust or dirt particles. Shake before use, then apply a thin layer of teak protector with a soft, lint-free cloth or paintbrush. Wait for a couple of hours before applying a second thin layer once the wood is thoroughly dried. Then again leave the product to dry fully so it accomplishes its optimal effect.

Frequent reapplication of this treatment is necessary due to its water-based nature. To assess the level of protection on the wood, perform a simple water test. If the water forms beads on the surface without being absorbed, it indicates sufficient protection. However, if the water is absorbed by the wood, it indicates that the protection has worn off and reapplication is required.





## NATURAL RATTAN

The CL RATTAN baskets and furniture pieces are made of rattan vines which are woven together. When exposed to the elements outdoors, this material develops a charming weathered appearance, adding to its allure. However, the lifespan is limited when exposed to certain weather conditions. Therefore, the CL rattan collection should be considered semi-outdoor resistant. This means that these pieces can be used outdoors in spring and summer months, from mid-May to mid-September. The rest of the year, they should be placed indoors or under a covered patio.

To ensure a longer lifetime, we advise cleaning the rattan with a brown soap and water solution each year to maintain flexibility. This brown soap or any kind of natural soap can also be used for regular cleaning. Afterward, we recommend treating the rattan with our GOMMAIRE Teak Protector on a yearly basis, making the material more water-repellent. You can use this product in a spray bottle to easily reach the entire surface.

Due to the 100% natural characteristics of the material, variations in colour and thickness may vary between pieces. Similar to wood, natural rattan is a living product. Climate changes, such as temperature and humidity, can make the rattan move, lose its shape, or sometimes pop out. Should this happen, the loose rattan stem can be woven back into place or cut off. If you have any more questions about the material, please contact our service department.

## **OUTDOOR FABRICS**

The GOMMAIRE collection showcases top-tier outdoor fabrics renowned for their exceptional quality. These fabrics are of Belgian and Italian origin.

The following information will help you understand, maintain, and protect your outdoor fabrics.





## ABOUT THE FABRICS

Discover our outdoor fabrics, meticulously woven from the finest quality yarns such as polypropylene and acrylic. With their natural touch and water-repellent, colour-fast properties, these fabrics offer both style and practicality. All our cushions are manufactured with quick-dry foam, making them ideal for outdoor use.

Outdoor cushions can be placed outside during the outdoor season. However, we recommend bringing them inside when you don't use them during longer periods of humid or wet weather and in winter. If you cannot store them somewhere dry, we recommend placing the cushions upright against the frame so that the water can run off and the cushions dry more easily.

Untreated teak furniture may release a reddish-brown substance known as "teak oil" when exposed to higher temperatures, resulting in brown discoloration that can be observed on the bottom of light-coloured cushions. These teak oil stains can be challenging to remove. Additionally, during the initial months before the teak wood has turned grey, it is advisable to only place the cushions on the teak wood frames when in use.

Cushion covers can be easily removed for cleaning. You can wipe down the fabrics with a damp cloth and mild soap at any given time. Make sure to clean the entire cushion instead of one concentrated area, to avoid any potential colour differences. And if there is any doubt, please test the solution first on a non-visible place on your cushion. After cleaning, make sure to rinse with water thoroughly so the soap is completely removed.

For more stubborn stains, we recommend washing them at 30°C with closed zippers. Afterward, it is best to place the cushion cover slightly damp over the cushion/furniture instead of using the dryer to prevent shrinkage and deformation. Except for our Knelout/Kneloutlux fabrics that include a dirt-resistant finish that is activated by heat. These fabrics can only be left in the dryer for 15 minutes max.

For tips on stain removal and other maintenance advice, please scan the QR code below, refer to our care and use page and find all information on our indoor and outdoor fabrics.













ALSO AVAILABLE



INDOOR 2024



DECORATION & ACCESSORIES 2024